



FOR SHOW UPDATES, VISIT
WWW.GRANDPARADISERANCH.COM

GRAND PARADISE RANCH SPORT HORSE SHOW

SATURDAY, OCTOBER 24, 2020

ARABIAN & HALF ARABIAN
DRESSAGE & WESTERN DRESSAGE

USEF NON-BREED RESTRICTIVE
WITH AQHA QUALIFYING POINTS
WESTERN DRESSAGE CLASSES

SUNDAY, OCTOBER 25 2020

WESTERN DRESSAGE LITE SHOW
USEF NON-BREED RESTRICTIVE
WITH AQHA QUALIFYING POINTS

APPROVED BY:
AHA, USEF, USDF, WDAIL,
MISHO, WD AQHA

AHA REGION 11
QUALIFYING SHOW

ENTRIES CLOSE:
WEDNESDAY, OCTOBER 14, 2020





SPORT HORSE SHOW

SHOW DATES:	ENTRIES CLOSE:
Saturday, October 24, 2020	Wednesday, October 14, 2020
Sunday, October 25, 2020	Wednesday, October 14, 2020

SATURDAY - OCTOBER 24, 2020

**ARABIAN & HALF ARABIAN
DRESSAGE & WESTERN DRESSAGE CLASSES**

**USEF NON-BREED RESTRICTIVE
WITH AQHA QUALIFYING POINTS
WESTERN DRESSAGE CLASSES**

SUNDAY – OCTOBER 25, 2020

**WESTERN DRESSAGE LITE SHOW
USEF NON-BREED RESTRICTIVE
WITH AQHA QUALIFYING POINTS**

USEF

Horse of the Year Points

AHA

A/HA/AA Horse Achievement Awards
Amateur Achievement Awards
Dressage Rider Awards
AHA Qualification Programs

AQHA

Western Dressage Points

USDF

All Breeds Award Points
USDF Rider Awards

WDAIL

Year End Awards Points

MISHO

Year End Awards Points

Grand Paradise Ranch Sport Horse Show

DATE:	JUDGES:	
Saturday, October 24, 2020	Paula Briney Cindy Butler	Dressage 'r' / Western Dressage 'r' Western Dressage 'R' & AQHA
Sunday, October 25, 2020	Cindy Butler	Western Dressage 'R' & AQHA Schooling Hunter/Jumper

Current Dressage and WDAA Tests will be used

SHOW OFFICIALS:

Show Manager	Linda Freeman	(618) 779-0579
Show Secretary	Cheryl Raynor	(618) 541-2809
Office Scoring	Cheryl Raynor	(618) 541-2809
USEF Steward	Marcie Cockrell	R/C2 Steward
Show Grounds	Tom Freeman	(314) 267-6134
Veterinarian	Equine Medical (on call)	(636) 458-3311

TENTATIVE SCHEDULE:

7:00 AM – 7:00 PM Each Day

Show Office Opens Friday from 6 PM to 8 PM & 1 Hour before First Scheduled Class Each Day

Food Will Be Available on the Show Grounds

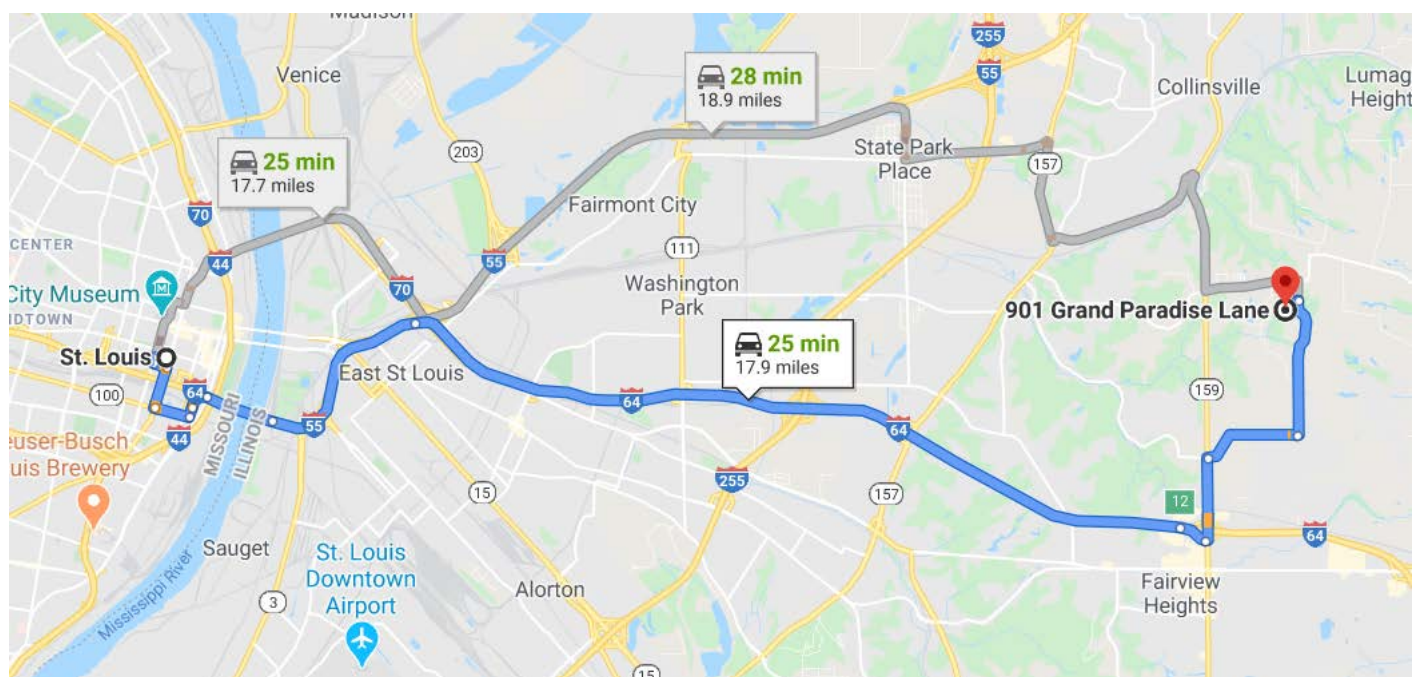


Andy Butler
Grill Master

7715 N. Illinois St.
Caseyville, IL 62232

Phone: 618-567-7715
clbutler@charter.net

Catering Parties and Events



Grand Paradise Ranch Sport Horse Show

REQUIRED FEES:

ALL COMPETITORS:

Office & Grounds Fee \$30 Per Day, Per Horse/Rider Combination

AHA/AQHA/USEF/USDF SHOW COMPETITORS ONLY:

USEF Fee \$23 (\$15 Drugs & Medication, \$8 Admin)
A/HA/AA-AHA Education 9-90 Fee \$17 (\$7 Per Horse/\$10 Results Processing)
AHA Single Event Membership Fee per Person \$35 (Avoid by joining AHA arabianhorses.org)
USEF Show Pass Fee \$45 (Avoid by joining USEF at www.usef.org)

GENERAL FEES:

Grand Paradise Ranch Coaching/Training Fee \$35 Per Day, Per Horse/Rider Combination
Required for GPR Students ONLY
Stall Fee (*shavings are included*) \$25 Per Day
Stalls are limited. Call Tom at (314) 267-6134 to check availability.
To submit a stall request, please visit www.grandparadiseranch.com/sporthorseshow
Incomplete Entry Fee \$10 Per Horse/Rider Combination
Credit Card Fee \$10 Per Horse/Rider Combination
Declined Credit Card Fee \$10 Per Occurrence
Returned Check Charge 10% penalty (minimum \$25.00) per check

CLASS FEES:

Dressage Tests - Intro through Second Level \$30 Per Class
Dressage Seat Medal \$30 Per Class
Western Dressage - Intro through Level 1 \$30 Per Class
Western Dressage Suitability, Equitation & Hack \$30 Per Class
Sport Horse Under Saddle \$30 Per Class
Sport Horse In Hand \$30 Per Class
Post Entry Fee (*after October 14, 2020*) \$10 Per Day, Per Horse/Rider Combination

PRIZES:

Ribbons Awarded 1st through 6th Place

ATTENTION EXHIBITORS

Each competitor is responsible for supplying management with correct applicable numbers (USDF/USEF/AHA/AQHA) for horse, owner, rider, and trainer, before the day(s) of the competition. The scores of competitors who fail to supply correct numbers may not be counted/recorded.

Grand Paradise Ranch Sport Horse Show

SATURDAY, OCTOBER 24 – ARABIAN & HALF ARABIAN DRESSAGE/SPORT HORSE CLASSES

CLASSICAL DRESSAGE

<u>Class #</u>	<u>AHA #</u>	
1	902	USDF Intro Test A – Walk/Trot 10 & Under
2	902	USDF Intro Test B – Walk/Trot 10 & Under
3	1382	USDF Intro Test C - Open
4	792	A/HA/AA Training Test 1 – ATR
5	792	A/HA/AA Training Test 1 – JTR
6	792	A/HA/AA Training Test 2 – ATR
7	792	A/HA/AA Training Test 2 – JTR
8	790	A/HA/AA Training Test 3 – Open
9	792	A/HA/AA Training Test 3 – ATR
10	792	A/HA/AA Training Test 3 – JTR
11	801	A/HA/AA First Level Test 1 – ATR
12	801	A/HA/AA First Level Test 1 – JTR
13	801	A/HA/AA First Level Test 2 – ATR
14	801	A/HA/AA First Level Test 2 – JTR
15	797	A/HA/AA First Level Test 3 – Open
16	801	A/HA/AA First Level Test 3 – ATR
17	801	A/HA/AA First Level Test 3 – JTR
18	1810	A/HA/AA Second Level Test 1 – ATR
19	1810	A/HA/AA Second Level Test 1 – JTR
20	1810	A/HA/AA Second Level Test 2 – ATR
21	1810	A/HA/AA Second Level Test 2 – JTR
22	1807	A/HA/AA Second Level Test 3 – Open
23	1810	A/HA/AA Second Level Test 3 – ATR
24	1810	A/HA/AA Second Level Test 3 – JTR

DRESSAGE TOC

<u>Class #</u>	<u>AHA #</u>	
1500	1500	Dressage USEF Test of Choice Introductory thru Second Level

DRESSAGE SEAT MEDAL

<u>Class #</u>	<u>AHA#</u>	
25	434	A/HA/AA Dressage Seat Medal

SPORT HORSE UNDER SADDLE

<u>Class #</u>	<u>AHA #</u>	
110	335	Arabian Sport Horse Under Saddle - Open
111	773	HA/AA Sport Horse Under Saddle – Open
112	339	Arabian Sport Horse Under Saddle – ATR
113	777	HA/AA Sport Horse Under Saddle – ATR
114	1066	Arabian Sport Horse Under Saddle – JTR
115	1095	HA/AA Sport Horse Under Saddle – JTR

SPORT HORSE IN HAND

<u>Class #</u>	<u>AHA#</u>	
116	53	Arabian Sport Horse Geldings In-Hand – Open
117	387	Arabian Sport Horse Geldings In-Hand – JTH
118	57	Arabian Sport Horse Geldings In-Hand - ATH
119	494	HA/AA Sport Horse Geldings In-Hand – Open
120	492	HA/AA Sport Horse Geldings In-Hand – JTH
121	498	HA/AA Sport Horse Geldings In-Hand - ATH
122	39	Arabian Sport Horse Mares In-Hand – Open
123	385	Arabian Sport Horse Mares In-Hand – JTH
124	43	Arabian Sport Horse Mares In-Hand – ATH
125	475	HA/AA Sport Horse Mares In-Hand – Open
126	490	HA/AA Sport Horse Mares In-Hand – JTH
127	479	HA/AA Sport Horse Mares In-Hand – ATH
128	46	Arabian Sport Horse Stallions In-Hand - Open
129	484	HA/AA Sport Horse Stallions In-Hand - Open

COMPLETE THE OCTOBER 24 ARABIAN & HALF ARABIAN SPORT HORSE SHOW ENTRY FORM TO ENTER THESE CLASSES

Grand Paradise Ranch Sport Horse Show

SATURDAY, OCTOBER 24 – ARABIAN & HALF ARABIAN WESTERN DRESSAGE CLASSES

WESTERN DRESSAGE- Intro thru Level 1

<u>Class #</u>	<u>AHA #</u>	
29	2213	A/HA/AA Western Dressage Intro Test 1 – ATR
30	2211	A/HA/AA Western Dressage Intro Test 1 – JTR
31	2213	A/HA/AA Western Dressage Intro Test 2 – ATR
32	2211	A/HA/AA Western Dressage Intro Test 2 – JTR
33	2213	A/HA/AA Western Dressage Intro Test 3 – ATR
34	2211	A/HA/AA Western Dressage Intro Test 3 – JTR
35	2201	A/HA/AA Western Dressage Intro Test 4 – Open
36	2213	A/HA/AA Western Dressage Intro Test 4 – ATR
37	2211	A/HA/AA Western Dressage Intro Test 4 – JTR
38	2313	A/HA/AA Western Dressage Basic Test 1 – ATR
39	2311	A/HA/AA Western Dressage Basic Test 1 – JTR
40	2313	A/HA/AA Western Dressage Basic Test 2 – ATR
41	2311	A/HA/AA Western Dressage Basic Test 2 – JTR
42	2313	A/HA/AA Western Dressage Basic Test 3 – ATR
43	2311	A/HA/AA Western Dressage Basic Test 3 – JTR
44	2301	A/HA/AA Western Dressage Basic Test 4 – Open
45	2313	A/HA/AA Western Dressage Basic Test 4 – ATR
46	2311	A/HA/AA Western Dressage Basic Test 4 – JTR
47	2413	A/HA/AA Western Dressage Level 1 Test 1 – ATR
48	2411	A/HA/AA Western Dressage Level 1 Test 1 – JTR
49	2413	A/HA/AA Western Dressage Level 1 Test 2 – ATR
50	2411	A/HA/AA Western Dressage Level 1 Test 2 – JTR
51	2413	A/HA/AA Western Dressage Level 1 Test 3 – ATR
52	2411	A/HA/AA Western Dressage Level 1 Test 3 – JTR
53	2404	A/HA/AA Western Dressage Level 1 Test 4 – Open
54	2413	A/HA/AA Western Dressage Level 1 Test 4 – ATR
55	2411	A/HA/AA Western Dressage Level 1 Test 4 – JTR

WESTERN DRESSAGE – Level 2 thru Level 4

<u>Class #</u>	<u>AHA #</u>	
56	2513	A/HA/AA Western Dressage Level 2 Test 1 – ATR
57	2511	A/HA/AA Western Dressage Level 2 Test 1 – JTR
58	2513	A/HA/AA Western Dressage Level 2 Test 2 – ATR
59	2511	A/HA/AA Western Dressage Level 2 Test 2 – JTR
60	2513	A/HA/AA Western Dressage Level 2 Test 3 – ATR
61	2511	A/HA/AA Western Dressage Level 2 Test 3 – JTR
62	2501	A/HA/AA Western Dressage Level 2 Test 4 – Open
63	2513	A/HA/AA Western Dressage Level 2 Test 4 – ATR
64	2511	A/HA/AA Western Dressage Level 2 Test 4 – JTR
65	2563	A/HA/AA Western Dressage Level 3 Test 1 – ATR
66	2561	A/HA/AA Western Dressage Level 3 Test 1 – JTR
67	2563	A/HA/AA Western Dressage Level 3 Test 2 – ATR
68	2561	A/HA/AA Western Dressage Level 3 Test 2 – JTR
69	2563	A/HA/AA Western Dressage Level 3 Test 3 – ATR
70	2561	A/HA/AA Western Dressage Level 3 Test 3 – JTR
71	2551	A/HA/AA Western Dressage Level 3 Test 4 – Open
72	2563	A/HA/AA Western Dressage Level 3 Test 4 – ATR
73	2561	A/HA/AA Western Dressage Level 3 Test 4 – JTR
74	2582	A/HA/AA Western Dressage Level 4 Test 1 – ATR
75	2580	A/HA/AA Western Dressage Level 4 Test 1 – JTR
76	2582	A/HA/AA Western Dressage Level 4 Test 2 – ATR
77	2580	A/HA/AA Western Dressage Level 4 Test 2 – JTR
78	2582	A/HA/AA Western Dressage Level 4 Test 3 – ATR
79	2580	A/HA/AA Western Dressage Level 4 Test 3 – JTR
80	2570	A/HA/AA Western Dressage Level 4 Test 4 – Open
81	2582	A/HA/AA Western Dressage Level 4 Test 4 – ATR
82	2580	A/HA/AA Western Dressage Level 4 Test 4 – JTR

WESTERN DRESSAGE SUITABILITY, EQUITATION & HACK

<u>Class #</u>	<u>AHA#</u>	
90	2517	A/HA/AA Western Dressage Suitability – Open
91	2519	A/HA/AA Western Dressage Suitability – JTR
92	2219	A/HA/AA Western Dressage Seat Equitation – ATR
93	2217	A/HA/AA Western Dressage Seat Equitation – JTR
94	2417	A/HA/AA Western Dressage Hack – Open
95	2421	A/HA/AA Western Dressage Hack – ATR

COMPLETE THE OCTOBER 24 ARABIAN & HALF ARABIAN SPORT HORSE SHOW ENTRY FORM TO ENTER THESE CLASSES

Grand Paradise Ranch Sport Horse Show

SATURDAY, OCTOBER 24 – WESTERN DRESSAGE CLASSES - Non-Breed Restrictive
USEF Non-Breed Restrictive Qualifying Points & American Quarter Horse Association (AQHA) Qualifying Points

WESTERN DRESSAGE

Class

601	WDAA Introductory Test 1 - Open
602	WDAA Introductory Test 1 - Jr/AA
603	WDAA Introductory Test 2 - Open
604	WDAA Introductory Test 2 - Jr/AA
605	WDAA Introductory Test 3 - Open
606	WDAA Introductory Test 3 - Jr/AA
607	WDAA Introductory Test 4 - Open
608	WDAA Introductory Test 4 - Jr/AA
611	WDAA Basic Level Test 1 - Open
612	WDAA Basic Level Test 1 - Jr/AA
613	WDAA Basic Level Test 2 - Open
614	WDAA Basic Level Test 2 - Jr/AA
615	WDAA Basic Level Test 3 - Open
616	WDAA Basic Level Test 3 - Jr/AA
617	WDAA Basic Level Test 4 - Open
618	WDAA Basic Level Test 4 - Jr/AA
621	WDAA Level 1 Test 1 - Open
622	WDAA Level 1 Test 1 - Jr/AA
623	WDAA Level 1 Test 2 - Open
624	WDAA Level 1 Test 2 - Jr/AA
625	WDAA Level 1 Test 3 - Open
626	WDAA Level 1 Test 3 - Jr/AA
627	WDAA Level 1 Test 4 - Open
628	WDAA Level 1 Test 4 - Jr/AA
631	WDAA Level 2 Test 1 - Open
632	WDAA Level 2 Test 1 - Jr/AA
633	WDAA Level 2 Test 2 - Open
634	WDAA Level 2 Test 2 - Jr/AA
635	WDAA Level 2 Test 3 - Open
636	WDAA Level 2 Test 3 - Jr/AA
637	WDAA Level 2 Test 4 - Open
638	WDAA Level 2 Test 4 - Jr/AA

WESTERN SUITABILITY, HACK & EQUITATION

Class

641	WDAA Intro & Basic Suitability
642	WDAA Level 1 and Higher Hack
643	WDAA Western Dressage Equitation

**COMPLETE THE OCTOBER 24 WESTERN DRESSAGE
NON-BREED RESTRICTIVE SHOW ENTRY FORM
TO ENTER THESE CLASSES**

Grand Paradise Ranch Sport Horse Show

SUNDAY, OCTOBER 25 – WESTERN DRESSAGE LITE SHOW

USEF Non-Breed Restrictive Qualifying Points & American Quarter Horse Association (AQHA) Qualifying Points

WESTERN DRESSAGE

Class

701	WDAA Introductory Test 1 - Open
702	WDAA Introductory Test 1 - Jr/AA
703	WDAA Introductory Test 2 - Open
704	WDAA Introductory Test 2 - Jr/AA
705	WDAA Introductory Test 3 - Open
706	WDAA Introductory Test 3 - Jr/AA
707	WDAA Introductory Test 4 - Open
708	WDAA Introductory Test 4 - Jr/AA
711	WDAA Basic Level Test 1 - Open
712	WDAA Basic Level Test 1 - Jr/AA
713	WDAA Basic Level Test 2 - Open
714	WDAA Basic Level Test 2 - Jr/AA
715	WDAA Basic Level Test 3 - Open
716	WDAA Basic Level Test 3 - Jr/AA
717	WDAA Basic Level Test 4 - Open
718	WDAA Basic Level Test 4 - Jr/AA
721	WDAA Level 1 Test 1 - Open
722	WDAA Level 1 Test 1 - Jr/AA
723	WDAA Level 1 Test 2 - Open
724	WDAA Level 1 Test 2 - Jr/AA
725	WDAA Level 1 Test 3 - Open
726	WDAA Level 1 Test 3 - Jr/AA
727	WDAA Level 1 Test 4 - Open
728	WDAA Level 1 Test 4 - Jr/AA
731	WDAA Level 2 Test 1 - Open
732	WDAA Level 2 Test 1 - Jr/AA
733	WDAA Level 2 Test 2 - Open
734	WDAA Level 2 Test 2 - Jr/AA
735	WDAA Level 2 Test 3 - Open
736	WDAA Level 2 Test 3 - Jr/AA
737	WDAA Level 2 Test 4 - Open
738	WDAA Level 2 Test 4 - Jr/AA
742	WDAA Level 3 Test 1 - Open
743	WDAA Level 3 Test 1 - Jr/AA
744	WDAA Level 3 Test 2 - Open
745	WDAA Level 3 Test 2 - Jr/AA
746	WDAA Level 3 Test 3 - Open
747	WDAA Level 3 Test 3 - Jr/AA
748	WDAA Level 3 Test 4 - Open
749	WDAA Level 3 Test 4 - Jr/AA
750	WDAA Level 4 Test 1 - Open
751	WDAA Level 4 Test 1 - Jr/AA
752	WDAA Level 4 Test 2 - Open
753	WDAA Level 4 Test 2 - Jr/AA
754	WDAA Level 4 Test 3 - Open
755	WDAA Level 4 Test 3 - Jr/AA
756	WDAA Level 4 Test 4 - Open
757	WDAA Level 4 Test 4 - Jr/AA

WESTERN SUITABILITY, HACK & EQUITATION

Class

741	WDAA Intro & Basic Suitability
742	WDAA Level 1 and Higher Hack
743	WDAA Western Dressage Equitation

**COMPLETE THE OCTOBER 25 WESTERN DRESSAGE LITE
SHOW ENTRY FORM TO ENTER THESE CLASSES**

Grand Paradise Ranch Sport Horse Show

RULES AND REGULATIONS

EVERY CLASS OFFERED HEREIN WHICH IS COVERED BY THE RULES AND SPECIFICATIONS OF THE CURRENT USEF RULE BOOK WILL BE CONDUCTED AND JUDGED IN ACCORDANCE THEREWITH.

All questions not covered in these rules and regulations shall be decided by the show management whose decision shall be final. Every horse entered for competition will comply with the rules of the horse show management, but management will, in no case, be responsible for any loss or damage that may occur, and it shall be condition of entry that each exhibitor shall hold this horse show and the officials and employees of the show blameless for any loss or accident to his horse, employees, equipment, which may occur from sickness, fire or otherwise.

The management reserves the right to refuse, accept conditionally, or to cancel any entries, disqualify any riders or exhibitors, prohibit entries and cancel award prizes without claims for damages; to cancel or combine unfilled classes, or to reschedule classes after due notice to exhibitors; to change rings or rotate judges. Exhibitors are notified that any act of discourtesy or disobedience to the judges or officials, on the part of the owner, manager, rider, or groom shall disqualify the horse, and the owner shall forfeit his entry fee and other fees.

Show management reserves to itself the power to prohibit any person from attending or showing a horse in the ring and to remove any groom or horse from the show without being liable for compensation.

In accordance with the 1989 Federal Waste Tracking Act, which restricts the disposal of medical waste, bio-hazardous medical waste containers will be provided. All exhibitors and their agents are responsible for the proper disposal of this waste.

No person will be allowed in the show ring during the time of judging except the exhibitor and those having official or requested duties to perform.

ENTRY PROCEDURE: Entries must be made on an official entry form or photocopy of same and must be filled out completely, including all classes entered, all signatures, (no dittos), organization membership numbers and fees. Please include a photocopy of current membership ID for rider, owner, and trainer. Amateur must provide a copy of their Amateur card or proof of application for an Amateur card. Entries are accepted on a first-come, first served basis until classes are filled. Entries received after the closing date will be accepted only if the schedule permits. Each late entry that has been accepted shall be assessed a late fee of \$10 per show (per horse/rider combination). Changes to entries (\$10 fee) after the closing date will be at the sole discretion of the show management.

Arabian/Half Arabian Show Entries will only be considered complete if copies of each of the following are sent with Entry Form: Horse's Registration Certificate, Proof of Ownership (if applicable, AHA Competition Membership Cards (owner, trainer, rider, driver, handler), USEF Membership Cards (owner, trainer, rider, driver, handler, USEF Amateur Card (if applicable), USDF Membership Cards (if applicable), Check for Total Entry written to Grand Paradise Ranch (no blank checks accepted). Credit cards will be accepted with a \$10 fee per horse/rider combination added to your total.

THERE WILL BE AN ADDITIONAL \$10 CHARGE PER HORSE/RIDER COMBINATION FOR EACH INCOMPLETE ENTRY.

RETURNED CHECKS: Checks returned by the bank for any reason are regarded as a most serious offense and will be handled according to the following procedure: A 10% penalty (minimum \$25.00) will be assessed for each returned check. Credit cards that do not go through will incur a penalty of at least \$10 for each occurrence.

DECLINED CREDIT CARD CHARGE: A declined credit card charge will incur a \$10 fee per occurrence.

REFUNDS: All fees, less a \$30 administrative fee, will be returned if horses are scratched before the Closing Date.

REGISTRATION REQUIREMENTS: Horses shown in the Arabian Division must have been issued a certificate of registration from the Arabian Horse Association and must be entered under their full registered name. Horses shown in the Half-Arabian/Anglo-Arabian Division must have been issued a certificate of registration from the Arabian Horse Association in the Half-Arabian or Anglo-Arabian Registry and entered under their registered name.

AHA COMPETITION LEVEL MEMBERSHIP REQUIREMENTS: Every owner, trainer, driver, rider and handler must have a valid AHA membership card. Current Competition Level Membership is required for all owners, trainers, riders, drivers and handlers competing in Amateur/Junior classes or a Single Event Membership must be purchased for \$35 per person. Membership not required for Lead Line, Walk/Trot or Showmanship 10 & under classes.

AHA MEMBERSHIP STATEMENT: EACH COMPETITOR (THIS INCLUDES AT LEAST ONE RECORDED OWNER AND ALL TRAINERS, DRIVERS, RIDERS, HALTER HANDLERS, COACHES AND THE PERSON(S) SIGNING THE ENTRY BLANK) IN AN ARABIAN HORSE ASSOCIATION RECOGNIZED ARABIAN DIVISION, AT THE TIME OF ENTRY INTO A COMPETITION, MUST SUBMIT A COPY OF A VALID AHA MEMBERSHIP/COMPETITION CARD, JOIN AHA OR PAY AN AHA SINGLE EVENT MEMBERSHIP FEE PER COMPETITOR. WHEN AN AGENT SIGNS FOR THE OWNER AT AN AHA RECOGNIZED COMPETITION, BOTH THE OWNER AND AGENT MUST BE MEMBERS OF AHA OR PAY THE AHA SINGLE EVENT MEMBERSHIP. SINGLE EVENT MEMBERSHIP IS NOT ACCEPTABLE AT AHA REGIONAL OR NATIONAL COMPETITIONS. EXHIBITORS IN WALK-TROT CLASSES ARE EXEMPT FROM AHA MEMBERSHIP REQUIREMENTS AT QUALIFYING COMPETITIONS, BUT MUST HAVE AN AHA MEMBERSHIP WITH COMPETITION CARD AT AHA REGIONAL AND NATIONAL COMPETITIONS. EXHIBITORS IN LEAD LINE CLASSES OR PARENTS/GUARDIANS SIGNING FOR MINORS ARE EXEMPT FROM AHA MEMBERSHIP REQUIREMENTS. (BOD 5/12)

USEF STATEMENT: Life, senior active and junior active members shall be eligible to participate in all classes at Regular Competitions, Eventing Competitions at the Modified Level or above and Combined Driving Competitions at the Advanced Level, Dressage, Reining and Vaulting Competitions and Endurance Rides. A nonmember may participate as a handler, rider, driver, owner, lessee, agent, coach or trainer at Regular Competitions, Eventing Competitions, Dressage Competitions, Reining Competitions and Combined Driving Competitions upon payment of a \$45 Show Pass fee. Participants in the following classes are exempted from the Requirements of this rule: 1) leadline; 2) exhibitions; 3) games and races; 4) classes for 4-H members; 5) walk trot (exception: Friesian performance FR222) and academy classes (academy classes are classes limited to horses used regularly in a lesson program); 6) USDF introductory level tests, pas de deux and quadrille classes; 7) NRHA Endorsed Reining Competitions. 8) Opportunity classes, 9) citizens of other nations who have proof, in English, of current membership in good standing of their own National Federation, 10) USEA beginner novice division; and 11) assistant handlers in Dressage Sport Horse Breeding classes.

SAFESPORT REMINDER: All USEF Life and Senior Active members, as well as participants who have regular contact with minor athletes, are required to comply with the U.S. Center for SafeSport training requirement to be eligible to participate in the competition. All participants must adhere to the U.S. Center for SafeSport Code, USEF Safe Sport Policy, and the Minor Athlete Abuse Prevention Policies. More information about these can be found at www.usef.org.

AMATEURS AND JUNIORS: Amateurs are defined by the rules and specifications of the current USEF Rule Book. All riders entering the Amateur classes must possess or have applied for an USEF Amateur Card prior to riding in the class. Individuals are eligible as Juniors in the Arabian division if they have not reached their 19th birthday as of December 1st of the previous calendar year which is the start of the current competition year. For the Arabian breed all Junior Exhibitors are considered amateurs for competition purposes. Individuals possessing current amateur certification are only eligible as Arabian Adult Amateurs until they are no longer eligible to compete as Junior Riders. Western Dressage Junior riders are "Individuals are eligible as Junior Exhibitors until the end of the competition year in which they reach the age of 18."

USEF Amateur Cards are no longer available for nonmembers. For an exhibitor to compete in an Amateur restricted class they must be a USEF Active member and possess current amateur certification issued by the Federation.

SHOW STATUS: In the event of inclement weather, natural or other disasters prior to the show, it is the competitor's

responsibility to contact management as to the show status. Please call (314) 267-6134.

OFFICIALS: In the event that an official is unable to perform his duties, the Show Committee reserves the right to substitute an official according to USEF rules. The judge will break any tie in a jumping class. Exhibitors are warned that any act of discourtesy or disobedience to the officials on the part of the owner, groom, rider, driver or handler will disqualify the horse from adjudication. The management reserves the right to remove the horse's owner, groom, rider, driver, and/or handler from the show without being liable for compensation or damages.

RIDE TIMES: Times will be posted at grandparadiseranch.com and on the Grand Paradise Ranch Facebook page. It is the exhibitor's responsibility to contact show management if times are not received. Failure to enter the arena at the specified time may incur elimination.

ARENA: Show arena is 20 X 60 meters. Footing consists of a dust free, premier equestrian's geo-textile and fiber footing mixed with sand. Only those horses registered with the show management are permitted use of the show facilities, warm-up arena and show arena. All horses in the warm-up arena must wear their competition numbers. Lunging is allowed in specific areas only and upon receiving permission of the ring steward.

HEADGEAR RULE: From the time horses are officially admitted to the competition grounds by competition management, anyone mounted on a horse at any time on the competition grounds including non-competing riders, riders on non-competing horses, and those competing in all classes and tests, including Para-Equestrian tests must wear protective headgear as defined by this rule and otherwise in compliance with GR801.

Any rider violating this rule at any time must immediately be prohibited from further riding until such headgear is properly in place. Protective headgear is defined as a riding helmet which meets or exceeds ASTM (American Society for Testing and Materials)/SEI (Safety Equipment Institute) standard for equestrian use and carries the SE I tag. The harness must be secured and properly fitted. If there are questions regarding this rule or the use of protective headgear at USEF dressage competitions, please contact Hallye Griffin by email at hgriffin@usef.org or by phone (859) 225-6918.

SCORED TEST: Tests will be distributed to riders, or their authorized representative, after the results have been finalized and awards presented. Scores will be posted when available.

PROTESTS: Any protest must be filed in accordance with USEF Rules and/or AHA Code of Ethics rules.

STALLS: Permanent stalls are 10'x12' with sliding doors. Stalls are limited. Call Tom at (314) 267-6134 to check availability. **To submit a stall request, please visit www.grandparadiseranch.com/sporthorseshow.** Stall fee is \$25 per day or \$35 overnight (shavings included).

STALLIONS: Stallions must be in a stall or remain in the trailer unless being managed by a qualified person.

DOGS: Dogs must be on a leash. All animals should be managed so as to not disturb the competitors.

GOLF CARTS: Minors who do not have a valid driver's license which allows them to operate a motorized vehicle in the state in which they reside will not be permitted to operate a motorized vehicle of any kind, including, but not limited to, golf carts, motorcycles, scooters, or farm utility vehicles, on the competition grounds of licensed competitions. Minors who have a valid temporary license may operate the above described motorized vehicles as long as they are accompanied by an adult with a valid driver's license. The parent/legal guardian or individual who signs the entry blank as a parent or guardian of a minor operating a motorized vehicle in violation of this rule are solely responsible for any damages, claims, losses or actions resulting from that operation. Violations of this rule will be cause for penalties against those responsible for the child committing the offense. Wheelchairs and other mobility assistance devices for individuals with disabilities are exempt from this rule.

The unsafe use of personal electronic transport devices, as determined by the competition officials and management in their sole discretion, that do not require a driver's license to operate, including but not limited to segways, hover boards, and single wheeled scooters is prohibited on competition grounds. Operating such devices in areas where people gather

may be deemed “unsafe use” if there is a risk of harm to others. If the operator of the device is a minor, the parent/legal guardian or individual who signs the entry blank as a parent or guardian of a minor operating the device in violation of this rule is accountable and may be subject to penalties. Wheelchairs and other mobility assistance devices for individuals with disabilities are exempt from this rule.

USEF GR845 EQUINE VACCINATION RULE 1: At Federation licensed competitions, horses entering the grounds must be accompanied by documentation of Equine Influenza Virus and Equine Herpes Virus (Rhinopneumonitis) vaccinations within six months prior to entering the stables. Horses not in compliance with this rule may be required to leave the competition grounds upon request by Competition Management. Documentation should consist of one of the following methods mentioned below. The frequency of vaccine administration should be per the vaccine manufacturers’ or veterinarian’s recommendations. It is recommended that vaccines are administered by or under the direction of a veterinarian. 2. In the case of vaccines administered by a veterinarian, the exhibitor, upon request by Competition Management, must provide documentation from the veterinarian on documenting that the horse in question received the vaccinations; name of the vaccines and date of vaccine administration. 3. In the case of vaccines administered by a person other than a veterinarian, the exhibitor, upon request by Competition Management, must provide a receipt of the vaccine purchase which is signed by the owner, or agent with care, custody, and control of the horse; name, serial number and expiration date of the vaccine; and date of vaccine administration. 4. In the case of a horse that is unable to receive either of the vaccinations due to a history of adverse reactions, the exhibitor, upon request by Competition Management, must provide a letter from the veterinarian on official letterhead stating that the horse in question cannot be vaccinated due to medical concerns and a log of temperatures taken twice daily for the seven days prior to entering the competition grounds. These horses must also have their temperature taken and logged twice daily while on the competition grounds. The log of temperatures should be provided to the Competition Management, steward, or technical delegate when requested. 5. Competition Management may not amend or enhance vaccination requirements without prior approval of the Veterinary Committee. BOD 1/17/15 Effective 12/1/15.

ILLINOIS STATE HEALTH REQUIREMENTS: An official health certificate issued within 30 days of the show by licensed veterinarian must accompany all horses not residing in the State of Illinois. A negative Coggins certificate issued within the past 12 months must accompany all horses. The health and original Coggins certificates must be available for inspection at the time of check in. Do not mail with your entry. In case of suspected unsoundness or as a safeguard against communicable disease, all horse are subject to physical inspection by the show veterinarian.

DEFINITIONS AND CLASS SPECIFICATIONS: JT (R,D,H) Junior to Ride, Drive, Handle JOT (R,D,H) Junior Owner to Ride, Drive, Handle AAT (R,D,H) Adult Amateur to Ride, Drive, Handle AT (R,D,H) Amateur to Ride, Drive, Handle AOT (R,D,H) Amateur Owner to Ride, Drive, Handle UPHA--United Professional Horsemen’s Association

- Select Rider: See AHA Handbook for new definition of Select Riders.
- Walk Trot--Pleasure & Equitation Riders may not enter any other performance class in this show, except Lead Line, and/or Showmanship.

These shows are conducted in accordance with the rules of the USEF, Arabian & American Saddlebred Horse Divisions. EVERY CLASS OFFERED HEREIN WHICH IS COVERED BY THE RULES AND SPECIFICATIONS OF THE CURRENT USEF RULE BOOK WILL BE CONDUCTED AND JUDGED IN ACCORDANCE THEREWITH. Any changes or corrections of the rules will be automatically become part of this premium list. Each participant in the show is responsible for knowledge of and is subject to the USEF Rules. Exhibitors are encouraged to read the USEF Rule book, and particularly the complete Arabian and Half-Arabian Horse rules, class descriptions and judging specifications. The show committee will decide questions not covered by the USEF Rules, and its decision will be final.

SPORT HORSE DIVISION: The 2019 USDF/USEF Dressage Tests will be used. Sport Horse in Hand classes will use the Triangle pattern. **All entries will be accepted on a first come/first served basis.** Post entries will be accepted to fill scratched classes, and under the same rules as govern other classes. Classes will not necessarily run on the posted day or in Prize List order. Dressage horses competing at USEF Licensed Arabian Competitions are not limited to a maximum of tests per day at Fourth Level or below (exception: open Dressage classes or divisions). **Management has the right to limit class entries.**

USDF Membership Benefits: USDF is dedicated to education, the recognition of achievement, and promotion of dressage. For details on member benefits, including educational programs, awards, and other opportunities, refer to the *USDF Member Guide* or the USDF website at www.usdf.org.

**This
competition
is recognized
by USDF
for 2021**

Membership Requirements for USEF-licensed/USDF-recognized Competitions: Owners and riders, including foreign riders and owners who are not residents of the US, wishing to participate in a USEF-licensed/USDF-recognized competition as a rider or owner/lessee, must have either a USDF Group Membership (GM), Participating Membership (PM), or have a USDF Non-Member (NM) identification number and pay the USDF Non-Member (NM) fee. (Note: USDF Business Members can own horses but cannot compete as riders with their USDF Business Membership.)

Horses competing at USEF-licensed/USDF-recognized competitions must have either a USDF Horse Identification (HID) number or a USDF Lifetime Horse Registration (LHR). Proper credentials or verification certificates must be presented to the competition secretary.

Riders and owners wishing to participate in a USEF-licensed/USDF-recognized competition, and not able to present the competition secretary with verification of a USDF membership or NM identification, and USDF LHR or USDF HID, must complete a USDF Competition Affidavit Form and pay the \$5 affidavit filing fee. A copy of a completed affidavit form from another competition may also be used for verification purposes for up to 60 days. (Exception: Affidavits cannot be used at Great American Insurance Group/USDF Regional Dressage Championships.)

Exceptions:

- Horses competing only in Individual Breed Classes (IBCs) at DSHB competitions, sires and dams of horses in DSHB group classes, where those sires or dams are not actually competing in the same competition, horses competing only in breed restricted dressage or DSHB classes at Regular Competitions (e.g. all Arabian, all Friesian, or all Morgan classes), or in USDF Introductory Level tests, pas de deux or quadrille, are exempt from this requirement. Also exempt are horses ridden in leadline, exhibitions, games and races, classes for 4-H members, walk-trot, academy, and opportunity classes.
- Riders and owners/lessees competing only in classes which are exempt from the USDF HID requirements are also exempt from the USDF NM identification number and NM fee requirements. Also exempt are handlers of horses competing in DSHB In-Hand or Group classes.

Memberships Defined

Participating Membership (PM): A membership issued to an individual directly by USDF. The membership year is December 1 through November 30. PMs are available for 1-year (\$90), 5-years (\$360), or life (\$1,800). A USDF Youth Participating Membership (YPM) is available for individuals who have not reached their 21st birthday by December 1 of the current membership year (\$72). A PM allows the member to compete at USEF-licensed/USDF-recognized competitions and to participate as a rider and/or owner/lessee for all Adequan®/USDF Year-End Awards and the Great American Insurance Group/USDF Regional Dressage Championship program.

Group Membership (GM): A membership issued to an individual by USDF when the member name and dues are submitted to USDF through an affiliate Group Member Organization (GMO). The GM year begins December 1 and ends November 30. A GM allows the member to compete at USEF-licensed/USDF-recognized competitions and participate in the USDF Rider Awards Program and the USDF Regional Schooling Show Awards Program.

Business Membership (BM): A membership that runs December 1 through November 30 and is issued to a business or organization directly by USDF. The USDF BM (\$240) offers a wider variety of advertising benefits. BMs satisfy requirements of horse ownership only.

Non-Member (NM) Identification Number: For each USDF NM owner/lessee and USDF NM rider there will be a USDF NM fee of \$35 per competition that must be collected by the show secretary and submitted to USDF, along with the USDF Report of Fees document and the \$5 affidavit fee and Competition Affidavit Form if the person cannot provide a copy of their USDF NM card. Owners/lessees or riders exempt from the NM number requirements are also exempt from paying the USDF NM fee. If there are multiple owners of a horse and all are NMs, only one of the owners must pay the NM fee. If the horse has at least one owner who is a current USDF PM, GM, or BM there is no NM fee assessed. Competition management will be invoiced for all applicable USDF NM fees not received with the USDF post-competition paperwork, along with a report listing all USDF NMs. Competition management is then required to submit the NM fees within 30 days to the USDF. An individual with a USDF NM identification number is not eligible for any USDF membership benefits. Once a USDF NM number has been assigned, a USDF NM card can be obtained from the USDF website.

Horse Identification (HID) Number: A one-time tracking number for horses (\$35). Scores earned by a horse with an HID number will be recorded, but will NOT be counted towards Adequan®/USDF Year-End Awards. A horse with an HID number is not eligible to compete in Great American Insurance Group/USDF Regional qualifying or championship classes. An HID number can be upgraded to a Lifetime Horse Registration (LHR) for a fee of \$80. If a horse has a USDF LHR it does not need an HID number. An HID number is a one-time fee that does not need to be renewed.

Lifetime Horse Registration (LHR): A horse with an LHR (\$115) is eligible for Adequan®/USDF Year-End Awards, and eligible to compete in Great American Insurance Group/USDF Regional qualifying and championship classes, assuming requirements for the owner and rider are met. If a horse has an LHR it does not need an HID number. An LHR does not need to be renewed.

How to Join USDF

Applications for USDF Participating Membership (PM), Business Membership (BM), Horse Identification (HID) number, and Lifetime Horse Registration (LHR) may be found in the following locations:

- On the USDF website: www.usdf.org. You can submit the application online or download the form and fax or mail it to the USDF office.
- In the show office at USEF-licensed/USDF-recognized competitions classified by USEF as Dressage Competitions, and Regular Competitions which are open to all breeds.
- By calling or writing the USDF office at (859) 971-2277, 4051 Iron Works Parkway, Lexington, KY 40511

The effective date of membership is the date the form and correct fees are received in the USDF office or, if applying at a competition, the date accepted by the competition secretary, provided the application is signed and dated by the competition secretary, member, and/or horse owner on that same day.

ATTENTION COMPETITORS

USEF SAFE SPORT TRAINING REQUIREMENT

Starting January 1, 2019, if you are a USEF Competing Member 18 years of age or older you are required to complete the core Safe Sport Training within 30 days of activating your membership.

If you do not complete the training, you are ineligible to participate in all USEF activities including competitions.

TAKE the SAFE SPORT TRAINING at USEF.org by logging into your member dashboard.

#youarenotalone



USEF Competition Name: GRAND PARADISE RANCH SPORT HORSE SHOW USEF#: 340782
Competition Division(s) and Rating(s): **Breed Show – Arabian / Half Arabian / Anglo Arabian**

FINALLY, THE INSURANCE YOU NEED AT A PRICE YOU CAN AFFORD



HEALTH & INSURANCE BENEFITS



Now with just a few clicks, you can purchase the valuable coverage you and your family need.

You deserve the peace of mind that comes with having affordable, easy-to-understand benefits for you and your family. Now with your paid-fan or competing **USEF Membership**, you can sign up for a range of benefits from well-known, established insurance companies, with savings up to 35% or more!

You Can Get Coverage For...



Individual/
Family Health
Insurance



Teledoc



Global Health
Insurance



Personal Liability,
Death & Disability
Insurance



Group Health
Insurance



Free Mental
Health First Aid



Ground & Air
Ambulance



Financial
Lock



Dental, Vision, Disability, Accident,
Critical Illness, and Life Insurance



Farm, Equine, & Pet Insurance

 These benefits can be customized for individuals, families, business owners, executives, and your employees

Visit **USEF.org/insurance** to learn more and find your rate today.
Or call us at **(800) 349-1082** to speak with your USEF benefits team.



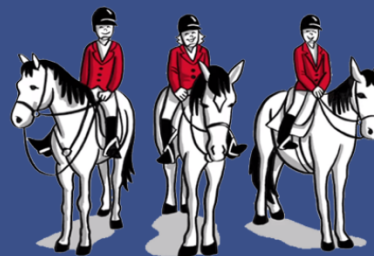
GRAND PARADISE RANCH
USEF Competition Name: WESTERN DRESSAGE LITE SHOW
Competition Division(s) and Rating(s): **WESTERN DRESSAGE**

USEF#: **340784**

FINALLY, THE INSURANCE YOU NEED AT A PRICE YOU CAN AFFORD



HEALTH & INSURANCE BENEFITS



Now with just a few clicks, you can purchase the valuable coverage you and your family need.

You deserve the peace of mind that comes with having affordable, easy-to-understand benefits for you and your family. Now with your paid-fan or competing **USEF Membership**, you can sign up for a range of benefits from well-known, established insurance companies, with savings up to 35% or more!

You Can Get Coverage For...



Individual/
Family Health
Insurance



Teledoc



Global Health
Insurance



Personal Liability,
Death & Disability
Insurance



Group Health
Insurance



Free Mental
Health First Aid



Ground & Air
Ambulance



Financial
Lock



Dental, Vision, Disability, Accident,
Critical Illness, and Life Insurance



Farm, Equine, & Pet Insurance

 These benefits can be customized for individuals, families, business owners, executives, and your employees

Visit **USEF.org/insurance** to learn more and find your rate today.
Or call us at **(800) 349-1082** to speak with your USEF benefits team.



Arabian Horse Association Show Recognition

Competition Sponsor: Grand Paradise Ranch

AHA Recognition Show/Recording Number: **201115229**

The Arabian Horse Association is a major equine association serving members in the United States and Canada. It registers and maintains a database of more than one million Arabian, Half-Arabian and Anglo-Arabian horses and administers more than \$3 million in annual prize money. AHA produces championship events, recognizes over 500 Arabian horse shows and distance rides annually and provides activities and programs that promote breeding and ownership. For information about Arabian, Half-Arabian and Anglo-Arabian horses, call 303-696-4500, e-mail info@ArabianHorses.org or visit ArabianHorses.org.



Join AHA through your local club for the following great member benefits:

- Subscription *Arabian Horse Life* magazine
- Reduced rate for competition privileges across a variety of disciplines for local, regional and national AHA-approved shows and rides
- Peace of mind with 1 million in personal liability insurance through Equisure
- Preferred rates on horse registrations and transfers
- Preferred rates on ArabDataSource, the world's largest online Arabian horse resource
- No annual fee, low interest rate Bank of America affinity credit card
- Numerous opportunities to participate in award recognition and prize money programs
- Show circuits for AHA members at local, regional and national levels

Contact your local club: _____

The Judges & Stewards Commissioner is responsible for handling written and signed complaints relating to judges' and stewards' conduct when filed by exhibitors, show officials, AHA members or others, and when accompanied by a ten-dollar (\$10.00) filing fee [Resolution 5-90]. Other comments, compliments, questions, inquiries are encouraged when appropriate (no filing fee required). Write: Judges & Stewards Commissioner, PO Box 440949, Aurora, CO 80044-0949; (303) 696-4537.



Arabian Horse Association 10805 East Bethany Drive Aurora, CO 80014 303.696.4500 303.696.4599 fax ArabianHorses.org
AHA 090032 (Rev. 03/17)

Grand Paradise Ranch | 901 Grand Paradise Lane | Caseyville, IL 62232 | www.grandparadiseranch.com

AQHA

AMERICAN QUARTER
HORSE ASSOCIATION

Show Number: 915112

Show Name: Grand Paradise Ranch

Location: Caseyville, IL

Date(s): Saturday, October 24, 2020



AMERICAN QUARTER
HORSE ASSOCIATION

Show Number: 915126

Show Name: Grand Paradise Ranch

Location: Caseyville, IL

Date(s): Sunday, October 25, 2020

Grand Paradise Ranch Sport Horse Show

HOTELS & ACCOMMODATIONS

Super 8

45 Ludwig Drive, Fairview Heights, IL 62208
618-398-8338

Hampton Inn

150 Ludwig Drive, Fairview Heights, IL 62208
618-397-9705

Drury Inn & Suites

12 Ludwig Drive, Fairview Heights, IL 62208
618-398-8530

Fairfield Inn

140 Ludwig Drive, Fairview Heights, IL 62208
618-398-7124

RESTAURANTS & FAST FOOD

There are many restaurants near St. Clair Square Mall which is located two miles from Grand Paradise Ranch.



Sarku Japan

★★★★★ Yelp (2)
American · \$\$\$\$ · Fairview
10:00 AM - 9:00 PM



Panda Express

★★★★★ Yelp (7)
Chinese · \$\$\$\$ · Fairview
11:00 AM - 9:00 PM



Charleys Philly Steaks

★★★★★ Yelp (2)
Fast Food · \$\$\$\$
10:00 AM - 9:00 PM



Sbarro

★★★★★ Yelp (3)
Italian · \$\$\$\$ · Fairview Height
10:00 AM - 9:00 PM



Cheddar's Scratch Kitchen

★★★★★ Yelp (107)
American · \$\$\$\$ · Fairview
11:00 AM - 10:00 PM



Five Guys

★★★★★ Yelp (51)
Burger · \$\$\$\$ · Fairview
11:00 AM - 10:00 PM



Long John Silver's

★★★★★ Yelp (5)
Seafood · \$\$\$\$ · Fairview
10:30 AM - 10:00 PM



Show-Me's Restaurant

★★★★★ Yelp (21)
American · \$\$\$\$ · Fairview
11:00 AM - 12:00 AM



McAlister's Deli

★★★★★ Yelp (19)
Deli · \$\$\$\$ · Fairview Heights
10:30 AM - 9:00 PM



Wasabi Sushi Bar

★★★★★ Yelp (64)
Sushi · \$\$\$\$ · Fairview Height
11:30 AM - 9:30 PM



Subway

★★★★★ Yelp (1)
Sandwiches, Fast Food · \$\$\$\$
7:00 AM - 9:00 PM



Red Robin Gourmet Burgers

★★★★★ Yelp (57)
Burger · \$\$\$\$ · Fairview
11:00 AM - 10:00 PM



Taco Bell

★★★★★ Yelp (5)
Mexican · \$\$\$\$ · Fairview
7:00 AM - 3:00 AM



Ruby Tuesday

★★★★★ Yelp (31)
American · \$\$\$\$ · Fairview
11:00 AM - 10:00 PM



Boston Market

★★★★★ Yelp (11)
Fast Food · \$\$\$\$ · Fairview
10:30 AM - 9:00 PM

Grand Paradise Ranch Sport Horse Show

COVID-19 ACTION PLAN

The US Equestrian Federation is dedicated to ensuring the safety and welfare of horses and all participants. While there is no way to eliminate all risks related to COVID-19, the following requirements and recommendations are aimed to decrease the risk of COVID-19 infection. These requirements and recommendations are intended to ensure USEF organizers such as Grand Paradise Ranch and participants are following the most recent guidance from federal, state, and other public health officials.

USEF-Licensed competitions must operate in accordance with the USEF COVID-19 Action Plan for USEF-Licensed Competitions (Plan). This plan is based on federal, state and local regulations, WHO recommendations, CDC guidelines and USEF requirements. There will be times when regulations, recommendations, guidelines and requirements may differ. In these instances, the more restrictive regulations, recommendations, guidelines and requirements will prevail and supersede all others, e.g. face masks/coverings may not be required by a state or local government but is required at a USEF licensed competition nonetheless due to CDC guidance.

Grand Paradise Ranch must implement the USEF requirements listed below, and very strongly encourage all recommended best practices contained herein or similar practices for mitigating risks related to the COVID-19 virus. These requirements are in effect immediately and until further notice, however, they are subject to revisions as the COVID-19 virus environment changes. For up-to-date, complete information please refer to the [USEF COVID 19-Action Plan](#). Participants are required to comply with these and any additional Competition Organizer requirements at all times while present on competition grounds. Failure to do so may result in expulsion from the grounds.

We are all in this together and the situation requires that each and every one of us take personal responsibility for the health, safety, and welfare of ourselves, our family members, and our colleagues and peers in the competition environment. Whether participant, competition organizer and staff, or vendor and support personnel, we each need to exercise caution, take precautionary measures, be accountable, and utilize good judgement at all times while interacting with one another at competitions.

LIMITED ACCESS. General public, spectators, and non-essential personnel such as guests are prohibited from being on the competition grounds until further notice. *Exception: minors under the age of 18 may be accompanied by a parent/guardian.

STAY HOME IF YOU ARE FEELING SICK. Anyone feeling unwell at any time should not come to or stay at the facility. Anyone exhibiting symptoms of COVID-19, or who has been tested positive or have been in contact with someone who has been tested positive for COVID-19 within two weeks of the event cannot enter the competition grounds. (**Healthcare personnel who have treated patients using appropriate medical-grade PPE during the course of performing professional duties are exempt from this restriction*).

TEMPERATURE CHECKS/MONITORING. Participants and Support Personnel are required to self-monitor their temperature once daily prior to entering the competition grounds. Anyone with a temperature of 99.5° F (37.5° C) or higher may not enter the facility. Grand Paradise Ranch employees plus all event staff, service providers, and volunteers will have body temperatures checked daily by non-contact thermometers before entering the competition grounds/facility.

FACE MASKS/FACE COVERINGS. All Grand Paradise Ranch employees will wear masks for the safety and comfort of participants. All individuals in attendance of the show must wear a cloth face covering, N-95 or KN-95 or surgical mask on competition grounds. Face masks and face coverings must fully cover the nose and the mouth while being worn. Masks are not mandatory when mounted on horseback; however, no rider will be disqualified for wearing a mask while riding. Participants should supply their own cloth face covering or masks. A limited number of surgical masks will be available for purchase in the Grand Paradise Ranch show office. You can find recommendations for proper use of face masks and face coverings via the [Centers for Disease Control & Prevention website](#).

SOCIAL DISTANCING. All participants, competition organizers, staff and all individuals at Grand Paradise Ranch must ALWAYS adhere to social distancing standards throughout the facility and grounds (including outdoor areas) at all times. All individuals must practice social distancing (or physical distancing) at all times while on the competition grounds by staying at least 6 feet (about 2 arms' length) from any person who is not a member of their immediate household. Members of the same household are still required to wear masks or face coverings when there is a possibility of being within six feet of any other individuals, including members of their own household. Occupancy restrictions establishing the maximum number of individuals permitted in a specific indoor area will be posted throughout the competition grounds. Only essential staff/individuals will be permitted in the Show Office, and participants should expect restricted access when entering this area. Ground-markers will help participants form a single-file line that maintains social distancing standards.

THE CENTER FOR DISEASE CONTROL AND INFECTIOUS DISEASE ADVISES THAT EVERYONE SHOULD:

WASH YOUR HANDS often with soap and water for at least 20 seconds especially after you have been in a public place or after blowing your nose, coughing, or sneezing. It's especially important to wash before eating or preparing food, before touching your face, after using the restroom, after leaving a public place, after blowing your nose, coughing, or sneezing, after handling your cloth face covering, after touching animals or pets. If soap and water are not readily available, use a hand sanitizer that contains at least 60% alcohol. Cover all surfaces of your hands and rub them together until they feel dry. Avoid touching your eyes, nose, and mouth with unwashed hands.

AVOID CLOSE CONTACT. Put 6 feet of distance (about 2 arms' length) between yourself and people who don't live in your household.

COVER YOUR MOUTH AND NOSE WITH A CLOTH FACE COVER WHEN AROUND OTHERS. Everyone should wear a cloth face cover in public settings and when around people who don't live in your household, especially when other social distancing measures are difficult to maintain. Continue to keep about 6 feet between yourself and others. The cloth face cover is not a substitute for social distancing.

COVER COUGHS AND SNEEZES. Always cover your mouth and nose with a tissue when you cough or sneeze or use the inside of your elbow and do not spit. Throw used tissues in the trash. Immediately wash your hands with soap and water for at least 20 seconds. If soap and water are not readily available, clean your hands with a hand sanitizer that contains at least 60% alcohol.

CLEAN AND DISINFECT FREQUENTLY TOUCHED SURFACES DAILY. This includes tables, doorknobs, light switches, countertops, handles, desks, phones, keyboards, toilets, faucets, and sinks. If surfaces are dirty, clean them. Use detergent or soap and water prior to disinfection. Then, use a household disinfectant.

MONITOR YOUR HEALTH DAILY. Be alert for symptoms. Watch for fever, cough, shortness of breath, or other symptoms of COVID-19. Take your temperature if symptoms develop.

ENFORCEMENT AUTHORITY. Competition organizers have the authority under GR702.1 and GR914 to remove from the facility any person who does not comply with the regulations and requirements in effect at the competition. USEF Technical Delegates will inform individuals when they are not in compliance with the regulations and requirements and will report such situations to competition organizers.

COVID-19 MANDATORY REPORTING. If any individual who was present on the competition grounds tests positive for COVID-19 within 14 days of the conclusion of competition, that individual must immediately notify both the Competition Organizer and the USEF. Direct USEF reports to ksacco@usef.org.

FACE MASKS AND SOCIAL DISTANCING REQUIRED

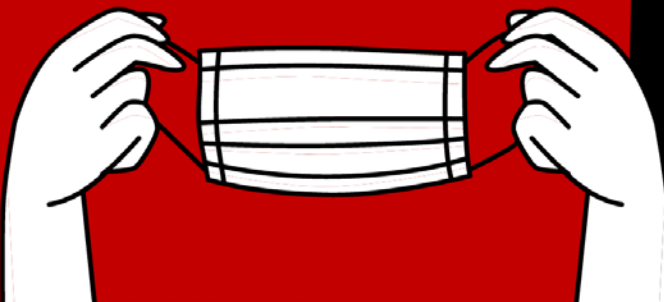


DO YOUR PART
STAY AT LEAST 6 FEET APART!



**MASKS & SOCIAL
DISTANCING
REQUIRED AT ALL
TIMES, WHEN NOT
MOUNTED**

- ✓ Mask must cover your nose and mouth at all times, when not mounted
- ✓ Maintain social distance of at least 6 feet from others at all times
- ✓ Keep mask on during photographs and maintain social distancing



Stop the Spread of Germs

Help prevent the spread of respiratory diseases like COVID-19.

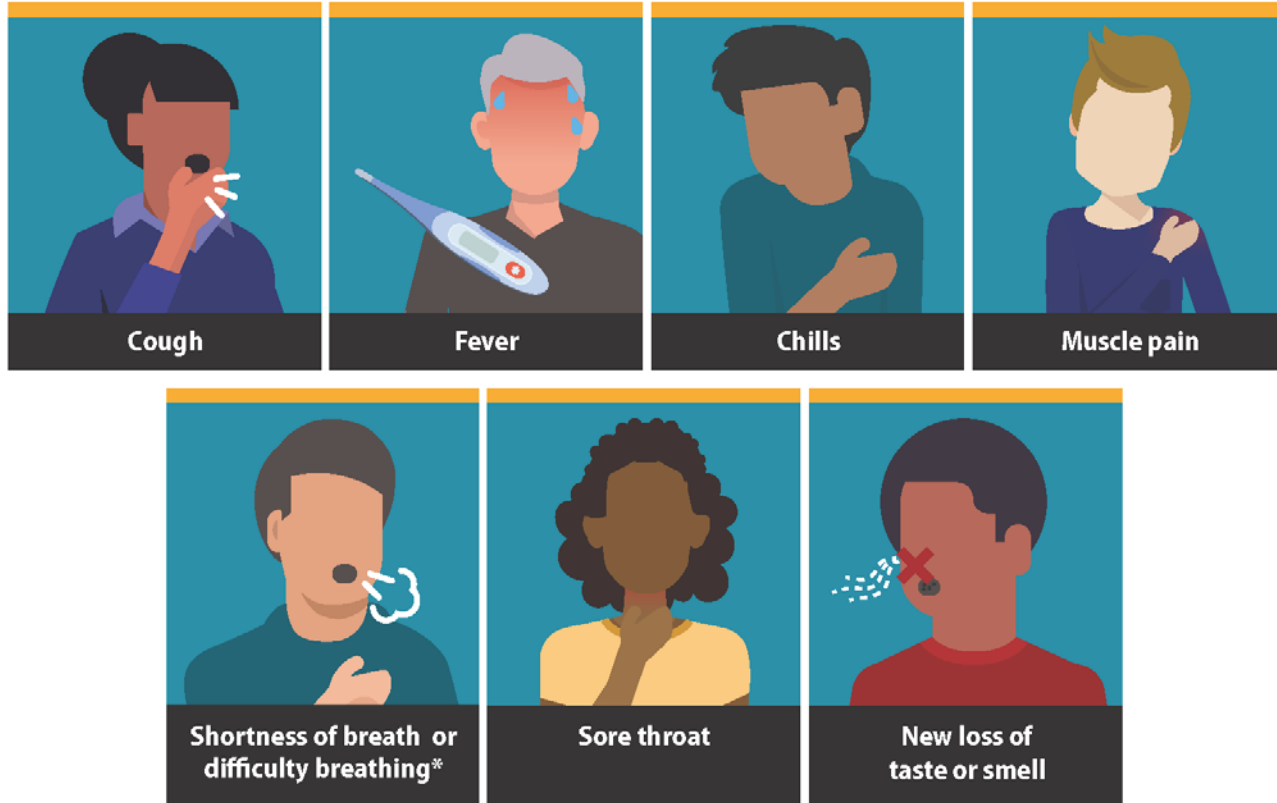


cdc.gov/coronavirus

316917-A May 13, 2020 11:00 AM

Symptoms of Coronavirus (COVID-19)

Know the symptoms of COVID-19, which can include the following:



Symptoms can range from mild to severe illness, and appear 2-14 days after you are exposed to the virus that causes COVID-19.

***Seek medical care immediately if someone has emergency warning signs of COVID-19.**

- Trouble breathing
- Persistent pain or pressure in the chest
- New confusion
- Inability to wake or stay awake
- Bluish lips or face

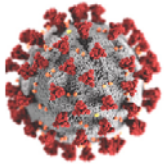
This list is not all possible symptoms. Please call your medical provider for any other symptoms that are severe or concerning to you.



cdc.gov/coronavirus

317142-A May 20, 2020 10:44 AM

What you should know about COVID-19 to protect yourself and others



Know about COVID-19

- Coronavirus (COVID-19) is an illness caused by a virus that can spread from person to person.
- The virus that causes COVID-19 is a new coronavirus that has spread throughout the world.
- COVID-19 symptoms can range from mild (or no symptoms) to severe illness.



Know how COVID-19 is spread

- You can become infected by coming into close contact (about 6 feet or two arm lengths) with a person who has COVID-19. COVID-19 is primarily spread from person to person.
- You can become infected from respiratory droplets when an infected person coughs, sneezes, or talks.
- You may also be able to get it by touching a surface or object that has the virus on it, and then by touching your mouth, nose, or eyes.



Protect yourself and others from COVID-19

- There is currently no vaccine to protect against COVID-19. The best way to protect yourself is to avoid being exposed to the virus that causes COVID-19.
- Stay home as much as possible and avoid close contact with others.
- Wear a cloth face covering that covers your nose and mouth in public settings.
- Clean and disinfect frequently touched surfaces.
- Wash your hands often with soap and water for at least 20 seconds, or use an alcohol-based hand sanitizer that contains at least 60% alcohol.



Practice social distancing

- Buy groceries and medicine, go to the doctor, and complete banking activities online when possible.
- If you must go in person, stay at least 6 feet away from others and disinfect items you must touch.
- Get deliveries and takeout, and limit in-person contact as much as possible.



Prevent the spread of COVID-19 if you are sick

- Stay home if you are sick, except to get medical care.
- Avoid public transportation, ride-sharing, or taxis.
- Separate yourself from other people and pets in your home.
- There is no specific treatment for COVID-19, but you can seek medical care to help relieve your symptoms.
- If you need medical attention, call ahead.



Know your risk for severe illness

- Everyone is at risk of getting COVID-19.
- Older adults and people of any age who have serious underlying medical conditions may be at higher risk for more severe illness.



CS 314937A 06/01/2020

cdc.gov/coronavirus

Grand Paradise Ranch Sport Horse Show

OCTOBER 24, 2020 - ENTRY FORM FOR: ARABIAN & HALF-ARABIAN SPORT HORSE SHOW & WESTERN DRESSAGE NON-BREED RESTRICTIVE CLASSES

Mail Entry to:

Cheryl Raynor
1341 Suak Trail, O'Fallon, IL 62269

Entries Close:

Wednesday, October 14

PLEASE TYPE OR PRINT - ONLY ONE RIDER/HORSE COMBINATION PER ENTRY FORM. All entries must be complete. Enclose correct fees, copies of horse registration papers, purchase contract (if applicable), amateur certification (if applicable), membership cards for each rider, driver, handler, and owner.

	Name of Horse		AHA Reg. No	DOB	Sex	Color	Height	Entry Fees
	Breed	Sire	Horse USEF #		Horse USDF #			
		Dam						
Rider/driver/handler (Provide Rider's Age if Under 18)	AHA# & Exp Date		Class #s In addition to providing class numbers below, it is recommended that you enclose class list with classes highlighted that you wish to enter				\$	
	AQHA Member#							
	AQHA Reg #							
	USEF#	USDF#						
Address	WDAIL Member: Y/N							
City, State, Zip	MISHO Member: Y/N							
Email	Rider/driver/handler Division							
Phone	JR/YR AA Open							

PHOTO COPIES REQUIRED of all Reg Papers and Membership cards for all Owners/Riders/Trainers or PAY INCOMPLETE ENTRY FEE

Owner (as appears on reg papers or contract) (May attach mailing label)

Name _____ AHA# & Exp. Date _____
 Address _____ USEF# _____ USDF# _____
 City, State, Zip _____ AQHA# _____
 Email _____ Phone _____

Trainer (Mandatory)

Name _____ AHA# & Exp. Date _____
 Address _____ USEF# _____ USDF# _____
 City, State, Zip _____ AQHA# _____
 Email _____ Phone _____

Each person signing this entry form acknowledges that he/she has read the front and reverses of this Entry Form and agrees to the applicable terms, conditions, waivers, releases, indemnification and consent as set forth herein. Each person agrees that the information is accurate to the best of his/her knowledge. All owners, trainers, riders, drivers and handlers must sign on the back. Minor entrants must also have a parent/guardian signature(s) on back.

Circle Type: Mastercard Visa Amex Discover

Name on Credit Card _____
 Billing Address _____
 Credit Card # _____ Exp. Date _____ Code _____

Office Use Only:

AHA/USEF/AQHA/Amateur Card Reg Papers / Signatures Coggins / Health
 Check # _____ Amount Rcvd _____ Credit/Balance Due _____

TOTAL CLASS FEES \$

FEES:

____ Office \$30 per horse/rider \$ ____
 combination per day
 ____ USEF Fee \$23/horse \$ ____
 \$15 drug/\$8 admin
 ____ AHA Fee \$17/horse \$ ____
 Res 9-90 \$7/Recogn \$10
 ____ AHA SEM \$35/person \$ ____
 ____ USEF Show Pass \$45 \$ ____
 ____ GPR Student Coaching \$ ____
 \$35 per horse/rider/day
 ____ Stall \$25/day \$35 overnight \$ ____
 ____ Credit Card \$10/horse \$ ____
 ____ Incomplete Entry \$10/horse \$ ____

TOTAL DUE \$

Make Checks Payable to:
Grand Paradise Ranch

AHA ENTRY AGREEMENT

I have read the rules concerning competitions as printed in the Arabian Horse Association (AHA) Handbook/Directory and Competition Prize List and agree to be bound by and subject to those Rules.

AHA ASSUMPTION OF RISK, RELEASE AND INDEMNIFICATION This document waives very important legal rights. Read it carefully before signing.

In consideration for AHA permitting me to participate in this Competition, and by signing the entry blank, I agree as follows:

I AGREE that I choose to participate voluntarily in this Competition, as a rider, driver, handler, lessee, owner, agent, coach, trainer, junior exhibitor, or as a parent or guardian of a junior exhibitor. **I AM FULLY AWARE AND ACKNOWLEDGE THAT HORSE SPORTS AND PARTICIPATION IN THIS COMPETITION INVOLVE SERIOUS RISK OF HARM INCLUDING, BUT NOT LIMITED TO, RISKS OF ACCIDENT, SERIOUS BODILY INJURY, INCLUDING DEATH, BROKEN BONES, HEAD INJURIES, TRAUMA, PAIN, AND SUFFERING, AND PROPERTY DAMAGE. I ASSUME ALL RISKS OF HARM TO ME, MY HORSE OR MY PROPERTY.**

I AGREE for myself, my heirs, executors, administrators, successors and assigns to release AHA, the Competition, the facilities leased by the Competition and the owner(s) of the facilities, and all of their respective officers, officials, directors, employees, agents, personnel, volunteers, affiliated organizations and insurers (collectively, the "Released Parties") from any and all claims for damage, loss, or injury to myself, other persons, horses or other property belonging to me to the fullest extent permitted by law that arises out of or relates in any way to the Competition and my participation in the Competition INCLUDING, BUT NOT LIMITED TO, DAMAGES, LOSS, OR INJURY RESULTING FROM ANY ACTS, FAILURE TO ACT, NEGLIGENCE OR NEGLECT OF OTHER ENTRANTS, THE RELEASED PARTIES, THEIR CONTRACTORS OR INVITEES, as well as for theft, vandalism, fire, other casualty damage, or damage arising out of any defects in the premises.

I AGREE to indemnify and hold harmless (that is pay all losses, damages, attorneys fees and costs of) the Released Parties from and against any and all claims, demands, penalties, actions, losses, costs, damages, injuries, liabilities and obligations (including attorneys fees) of whatsoever kind and nature, which may be asserted against or incurred by any of them as a result of (1) my participation in the Competition or (2) any act, failure to act, or neglect (a) by me, my agents, employees, riders, handlers, trainers, coaches, drivers, contractors or invitees, or (b) by any animal owned or exhibited by me or in my custody or control.

I AGREE and represent that I am qualified and eligible to enter and/or participate in the Competition, and every horse I am entering is qualified and eligible as entered.

I AGREE to accept AS FINAL any decision of AHA, the Show Commission or Show Officials concerning my qualification or the qualification of my horse to enter the Competition or any results of the Competition, except to the extent that the Rules of AHA, the Competition, CEF or USA Equestrian permit a protest or hearing of such decisions. Should a hearing be requested, I agree to accept AS FINAL the decision of the particular hearing body. I agree to release, hold harmless and not to sue AHA, the Competition Sponsor, their officers, directors, employees, volunteers or members concerning any decision of AHA, the Competition, its Show Commission, Show Officials or any hearing body that relates to my qualifications or my horse(s)' qualifications to enter the Competition or any results of the Competition.

I AGREE that AHA has the sole right to control, sell, supervise or give away (or assign to others the right to do so) the exclusive rights to broadcast, televise, reproduce, transmit and disseminate all or part of this event, and I agree that AHA may use or assign, in any way AHA sees fit, photographs, films, videos, audios, cablecasts, or other likenesses of me and my horse taken during the course of the Competition for the promotion, coverage or benefit of the Competition or AHA. Those likenesses shall not be used to advertise a product and they may not be used in such a way which implies endorsement of any company, product, product category or service. I hereby expressly and irrevocably waive and release any rights in connection with such use, including any claim to compensation, invasion of privacy, right of publicity, right of publicity, or to misappropriation.

By signing below as a parent or guardian of a junior exhibitor, I consent to the child's participation and agree to all of the above provisions, and further agree to assume all of the obligations of this AHA Assumption of Risk, Release and Indemnification personally and on behalf of the child.

This AHA Assumption of Risk, Release and Indemnification is governed by the Laws of the State of Colorado and is intended to be interpreted as broadly as possible. I agree that exclusive jurisdiction and venue (place) for any legal action against AHA, its officers, directors, employees, volunteers or agents shall be in the local district courts or the federal court of the State of Colorado. If any part of this agreement is determined to be unenforceable, all other parts shall remain effect.

Federation entry agreement

By entering a Federation-licensed Competition and signing this entry blank as the Owner, Lessee, Trainer, Manager, Agent, Coach, Driver, Rider, Handler, Vaultor or Longeur and on behalf of myself and my principals, representatives, employees and agents, I agree that I am subject to the Bylaws and Rules of The United States Equestrian Federation, Inc. (the "Federation") and the local rules of this Competition. I agree to be bound by the Bylaws and Rules of the Federation and of the competition. I will accept as final the decision of the Hearing Committee on any question arising under the Rules, and agree to release and hold harmless the competition, the Federation, their officials, directors and employees for any action taken under the Rules. I represent that I am eligible to enter and/or participate under the Rules, and every horse I am entering is eligible as entered. I also agree that as a condition of and in consideration of acceptance of entry, the Federation and/or the Competition may use or assign photographs, videos, audios, cable - casts, broadcasts, internet, film, new media or other likenesses of me and my horse taken during the course of the competition for the promotion, coverage or benefit of the competition, sport, or the Federation. Those likenesses shall not be used to advertise a product and they may not be used in such a way as to jeopardize amateur status. I hereby expressly and irrevocably waive and release any rights in connection with such use, including any claim to compensation, invasion of privacy, right of publicity, or to misappropriation. The construction and application of Federation rules are governed by the laws of the State of New York, and any action instituted against the Federation must be filed in New York State. See GR906.4.

Federation release, assumption of risk, Waiver, and indemnification this document waives important legal rights. read it carefully before signing.

I AGREE in consideration for my participation in this Competition to the following: I AGREE that the "Federation" and "Competition" as used herein includes the Licensee and Competition Management, as well as all of their officials, officers, directors, employees, agents, personnel, volunteers and Federation affiliates.

I AGREE that I choose to participate voluntarily in the Competition with my horse, as a rider, driver, handler, vaultor, longeur, lessee, owner, agent, coach, trainer, or as parent or guardian of a junior exhibitor. I am fully aware and acknowledge that horse sports and the Competition involve inherent dangerous risks of accident, loss, and serious bodily injury including broken bones, head injuries, trauma, pain, suffering, or death. ("Harm").

I AGREE to hold harmless and release the Federation and the Competition from all claims for money damages or otherwise for any Harm to me or my horse and for any Harm of any nature caused by me or my horse to others, even if the Harm arises or results, directly or indirectly, from the negligence of the Federation or the Competition.

I AGREE to expressly assume all risks of Harm to me or my horse, including Harm resulting from the negligence of the Federation or the Competition. I AGREE to indemnify (that is, to pay any losses, damages, or costs incurred by) the Federation and the Competition and to hold them harmless with respect to claims for Harm to me or my horse, and for claims made by others for any Harm caused by me or my horse while at the Competition. I have read the Federation Rules about protective equipment, including GR801 and, if applicable, EV114, and I understand that I am entitled to wear protective equipment without penalty, and I acknowledge that the Federation strongly encourages me to do so while **WARNING** that no protective equipment can guard against all injuries. If I am a parent or guardian of a junior exhibitor, I consent to the child's participation and AGREE to all of the above provisions and AGREE to assume all of the obligations of this Release on the child's behalf. I represent that I have the requisite training, coaching and abilities to safely compete in this competition. I AGREE that if I am injured at this competition, the medical personnel treating my injuries may provide information on my injury and treatment to the Federation on the official USEF accident/injury report form.

MUST BE SIGNED IN AT LEAST 3 PLACES BY SIGNING BELOW, I AGREE to be bound by all applicable Federation Rules and all terms and provisions of this entry blank and all terms and provisions of this Prize List. If I am signing and submitting this Agreement electronically, I acknowledge that my electronic signature shall have the same validity, force and effect as if I affixed my signature by my own hand. BOD 12/31/11 Effective 12/1/11

Owner - ** Mandatory	No Junior Signatures	Print Name	Signature X
Trainer or Custodian of horse @ show - ** Mandatory	No Junior Signatures Adult Owner must sign if no trainer	Print Name	Signature X
Rider 1 - ** Mandatory	No Junior Signatures	Print Name	Signature X
Rider 2 - ** Mandatory	No Junior Signatures	Print Name	Signature X
Rider 3 - ** Mandatory	No Junior Signatures	Print Name	Signature X
Coach - (if applicable) USEF #		Print Name	Signature X
Print Minor Name Here		Print Parent/Guardian Name Here	Signature X
Print Minor Name Here		Print Parent/Guardian Name Here	Signature X
***** EMERGENCY PHONE NUMBER FOR EXHIBITOR			

AHA or USEF/EC Membership is not required for Parents/Guardians signing for minors.

Grand Paradise Ranch Sport Horse Show

OCTOBER 25, 2020 - ENTRY FORM FOR: WESTERN DRESSAGE LITE SHOW

Mail Entry to:

Cheryl Raynor

1341 Suak Trail, O'Fallon, IL 62269

Entries Close:

Friday, October 14, 2020

PLEASE TYPE OR PRINT - ONLY ONE RIDER/HORSE COMBINATION PER ENTRY FORM. All entries must be complete. Enclose correct fees, copies of horse registration papers, purchase contract (if applicable), membership cards, amateur certification (if applicable), for each rider, driver, handler, and owner.

	Name of Horse	AHA Reg. No	DOB	Sex	Color	Height	
	Breed	Sire	Horse USEF #		Horse USDF #		Entry Fees
		Dam					
Rider/driver/handler <i>(Provide Rider's Age if Under 18)</i>	AHA# & Exp Date		Class #s In addition to providing class numbers below, it is recommended that you enclose class list with classes highlighted that you wish to enter				\$
	AQHA Member#						
	AQHA Reg#						
	USEF#	USDF#					
Address	WDAIL Member: Y/N						
City, State, Zip	MISHO Member: Y/N						
Email	Rider/driver/handler Division						
Phone	JR/YR AA Open						

*****PHOTO COPIES REQUIRED of all Reg Papers and Membership cards for all Owners/Riders/Trainers or PAY INCOMPLETE ENTRY FEE*****

Owner (as appears on reg papers or contract) (May attach mailing label)

Name _____ AHA# & Exp. Date _____
 Address _____ USEF# _____ USDF# _____
 City, State, Zip _____ AQHA# _____
 Email _____ Phone _____

TOTAL CLASS FEES \$

Trainer (Mandatory)

Name _____ AHA# & Exp. Date _____
 Address _____ USEF# _____ USDF# _____
 City, State, Zip _____ AQHA# _____
 Email _____ Phone _____

FEES:

_____ Office \$30 per horse/rider \$ _____
 combination per day
 _____ GPR Student Coaching \$ _____
 \$35 per horse/rider/day
 _____ Stall \$25/day \$35 overnight \$ _____
 _____ Credit Card \$10/horse \$ _____
 _____ Incomplete Entry \$10/horse \$ _____

Each person signing this entry form acknowledges that he/she has read the front and reverses of this Entry Form and agrees to the applicable terms, conditions, waivers, releases, indemnification and consent as set forth herein. Each person agrees that the information is accurate to the best of his/her knowledge. All owners, trainers, riders, drivers and handlers must sign on the back. Minor entrants must also have a parent/guardian signature(s) on back.

Circle Type: Mastercard Visa Amex Discover

Name on Credit Card _____
 Billing Address _____
 Credit Card # _____ Exp. Date _____ Code _____

Office Use Only:

AHA/USEF/AQHA/Amateur Card Reg Papers / Signatures Coggins / Health
 Check # _____ Amount Rcvd _____ Credit/Balance Due _____

TOTAL DUE \$

Make Checks Payable to:
Grand Paradise Ranch



WAIVER AND RELEASE OF LIABILITY, ASSUMPTION OF RISK AND INDEMNITY AGREEMENT

For and in consideration of United States Equestrian Federation, Inc. dba US Equestrian ("USEF") allowing me, the undersigned, to participate in any capacity (including as a rider, driver, handler, vaulter, longeur, lessee, owner, agent, coach, official, trainer or volunteer) in a USEF sanctioned, licensed or approved event or activity, including but not limited to equestrian clinics, practices, shows, competitions and related or incidental activities and ("USEF Event" or "USEF Events"); I, for myself, and on behalf of my spouse, children, heirs and next of kin, and any legal and personal representatives, executors, administrators, successors,, and assigns, hereby agree to and make the following contractual representations pursuant to this Agreement (the "**Agreement**"):

A. RULES AND REGULATIONS: I hereby agree to be bound and abide by the rules, regulations, and policies of USEF as published in the USEF Rule Book and on the website at www.usef.org, as amended from time to time.

B. ACKNOWLEDGMENT OF RISK: I knowingly, willingly, and voluntarily acknowledge the inherent risks associated with the sport of equestrian and know that horseback riding and related equestrian activities are inherently dangerous, and that participation in any USEF Event involves risks and dangers including, without limitation, the potential for serious bodily injury (including broken bones, head or neck injuries), sickness and disease (including communicable diseases), trauma, pain & suffering, permanent disability, paralysis and death; loss of or damage to personal property (including my mount & equipment) arising out of the unpredictable behavior of horses; exposure to extreme conditions and circumstances; accidents involving other participants, event staff, volunteers or spectators; contact or collision with other participants and horses, natural or manmade objects; adverse weather conditions; facilities issues and premises conditions; failure of protective equipment (including helmets); inadequate safety measures; participants of varying skill levels; situations beyond the immediate control of the USEF Event organizers and competition management; and other undefined, not readily foreseeable and presently unknown risks and dangers ("**Risks**").

WARNING:

Under the Equine Activity Liability Act, each participant who engages in an equine activity expressly assumes the risks of engaging in and legal responsibility for injury, loss, or damage to person or property resulting from the risk of equine activities.

C. ASSUMPTION OF RISK: I understand that the aforementioned Risks may be caused in whole or in part or result directly or indirectly from the negligence of my own actions or inactions, the actions or inactions of others participating in the USEF Events, or the negligent acts or omissions of the Released Parties defined below, and I hereby voluntarily and knowingly assume all such Risks and responsibility for any damages, liabilities, losses, or expenses that I incur as a result of my participation in any USEF Events. I also agree to be responsible for any injury or damage caused by me, my horse, my employees or contractors under my direction and control at any USEF Event.

D. WAIVER AND RELEASE OF LIABILITY, HOLD HARMLESS AND INDEMNITY: In conjunction with my participation in any USEF Event, I hereby release, waive and covenant not to sue, and further agree to indemnify, defend and hold harmless the following parties: USEF, USEF Recognized Affiliate Associations, the United States Olympic & Paralympic Committee (USOPC), USEF clubs, members, Event participants (including athletes/riders, coaches, trainers, judges/officials, and other personnel), the Event owner, licensee, and competition managers; the promoters, sponsors, or advertisers of any USEF Event; any charity or other beneficiary which may benefit from the USEF Event; the owners, managers, or lessors of any facilities or premises where a USEF Event may be held; and all directors, officers, employees, agents, contractors, and volunteers of any of the aforementioned parties (**Individually and Collectively, the "Released Parties" or "Event Organizers"**), with respect to any liability, claim(s), demand(s), cause(s) of action, damage(s), loss, or expense (including court costs and reasonable attorney fees) of any kind or nature ("**Liability**") which may arise out of, result from, or relate in any way to my participation in the USEF Events, including claims for Liability caused in whole or in part by the negligent acts or omissions of the Released Parties.

E. COMPLETE AGREEMENT AND SEVERABILITY CLAUSE: This Agreement represents the complete understanding between the parties regarding these issues and no oral representations, statements or inducements have been made apart from this Agreement. If any provision of this Agreement is held to be unlawful, void, or for any reason unenforceable, then that provision shall be deemed severable from this Agreement and shall not affect the validity and enforceability of any remaining provisions.

I HAVE CAREFULLY READ THIS DOCUMENT IN ITS ENTIRETY, UNDERSTAND ALL OF ITS TERMS AND CONDITIONS, AND KNOW IT CONTAINS AN ASSUMPTION OF RISK, RELEASE AND WAIVER FROM LIABILITY, AS WELL AS A HOLD HARMLESS AND INDEMNIFICATION OBLIGATIONS.

By signing below, I (as the participant or as the Parent/Legal Guardian of the minor identified below) hereby accept and agree to the terms and conditions of this Agreement in connection with my (or the minor's) participation in any USEF Event. If, despite this Agreement, I, or anyone on my behalf or the minor's behalf, makes a claim for Liability against any of the Released Parties, I will indemnify, defend and hold harmless each of the Released Parties from any such Liabilities as the result of such claim.

The parties agree that this agreement may be electronically signed. The parties agree that the electronic signatures appearing on this agreement are the same as handwritten signatures for the purposes of validity, enforceability, and admissibility.

☐ RIDER/DRIVER/HANDLER/VAULTER/LONGEUR ☐ OWNER ☐ TRAINER ☐ OFFICIAL ☐ STAFF ☐ VOLUNTEER ☐ COACH (IF APPLICABLE)

Signature: _____ Print Name: _____

Parent/Guardian Signature: (Required if Rider/Driver/Handler/Vaulter/Longeur is a minor) _____

Print Parent//Guardian Name: _____ Emergency Contact Phone No. _____



FEDERATION ENTRY AGREEMENT

By entering a Federation-licensed Competition and signing this entry blank as the Owner, Lessee, Trainer, Manager, Agent, Coach, Driver, Rider, Handler, Vaulteur or Longeur and on behalf of myself and my principals, representatives, employees and agents, I agree that I am subject to the Bylaws and Rules of The United States Equestrian Federation, Inc. (the "Federation") and the local rules of _____ (Competition). I agree to be bound by the Bylaws and Rules of the Federation and of the competition. I will accept as final the decision of the Hearing Committee on any question arising under the Rules, and agree to release and hold harmless the competition, the Federation, their officials, directors and employees for any action taken under the Rules. I represent that I am eligible to enter and/or participate under the Rules, and every horse I am entering is eligible as entered. I also agree that as a condition of and in consideration of acceptance of entry, the Federation and/or the Competition may use or assign photographs, videos, audios, cable - casts, broadcasts, internet, film, new media or other likenesses of me and my horse taken during the course of the competition for the promotion, coverage or benefit of the competition, sport, or the Federation. Those likenesses shall not be used to advertise a product and they may not be used in such a way as to jeopardize amateur status. I hereby expressly and irrevocably waive and release any rights in connection with such use, including any claim to compensation, invasion of privacy, right of publicity, or to misappropriation. The construction and application of Federation rules are governed by the laws of the State of New York, and any action instituted against the Federation must be filed in New York State. See GR908.4.

BY SIGNING BELOW, I AGREE to be bound by all applicable Federation Rules and all terms and provisions of this entry blank and all terms and provisions of this Prize List. If I am signing and submitting this Agreement electronically, I acknowledge that my electronic signature shall have the same validity, force and effect as if I affixed my signature by my own hand.

RIDER/DRIVER/HANDLER/VAULTER/LONGEUR (mandatory)

Signature: _____

Print Name: _____

TRAINER (mandatory)

Signature: _____

Print Name: _____

OWNER/AGENT (mandatory)

Signature: _____

Print Name: _____

COACH (if applicable)

Signature: _____

Print Name: _____

Parent/Guardian Signature: (Required if Rider/Driver/Handler/Vaulteur/Longeur is a minor) _____

Print Parent//Guardian Name: _____ Emergency Contact Phone No. _____

Is Rider/Driver/Vaulteur a U.S. Citizen: ☐ Yes ☐ No

HARD HAT AGREEMENT

I, the undersigned, being over 18 years of age and riding only my own horse, understand that either failing to wear protective headgear, or wearing protective headgear not ASTM/SEI approved while riding horses, increases the risk of serious injury and/or death. Understanding these risks, I am voluntarily electing to ride without protective headgear and/or without an ASTM/SEI approved headgear.

I, on my own behalf, and on behalf of my spouse, heirs, agents, representatives, relatives, successors, and assigns, agree to release and hold Grand Paradise Ranch, as well as its managers, officers, directors, members, partners, subsidiaries, parent companies, affiliates, agents, attorneys, assistants, representatives, assigns, volunteers, employees, independent contractors, trainers, animal owners, and others acting on their behalf, as well as these individuals' spouse, heirs, relatives, agents, attorneys, assigns, and others acting on their behalf (collectively "Released Parties"), harmless for any illness, injury, death, damage, or other loss incurred by me or others as a result of my not wearing protective headgear or wearing protective headgear not ASTM/SEI approved.

I, on my own behalf, and on behalf of my spouse, heirs, agents, representatives, relatives, successors, and assigns, agree to reimburse Grand Paradise Ranch for any and all attorneys' fees and costs incurred by it in enforcing the terms of this Agreement and/or in defending or prosecuting any claims or causes of action arising out of this Agreement.

This Agreement shall be construed and enforced in accordance with the laws of the State of Illinois. All disputes relating to the interpretation and enforcement of the provisions of this Agreement shall be resolved exclusively by the state court located in St. Clair County, Illinois, and I hereby submit to the jurisdiction and venue of the court for such purpose. I, on my own behalf, and on behalf of my spouse, heirs, agents, representatives, relatives, successors, and assigns, agree that any and all claims and/or causes of action, for injury, death, property damage or other claims or losses, against Grand Paradise Ranch, and/or their respective heirs, spouse, directors, members, subsidiaries, affiliates, agents, officers, assigns, volunteers, employees, independent contractors, and affiliated groups, must be brought within one (1) year of the date of the occurrence giving rise to such claim or loss.

By signing below, I agree that I have read this entire Agreement and understand, agree, and intend on my own behalf, and on behalf of my spouse, heirs, agents, representatives, relatives, successors, and assigns, to be bound by all of the terms and conditions contained herein.

WARNING

UNDER THE EQUINE ACTIVITY LIABILITY ACT, EACH PARTICIPANT WHO ENGAGES IN AN EQUINE ACTIVITY EXPRESSLY ASSUMES THE RISKS OF ENGAGING IN AND LEGAL RESPONSIBILITY FOR INJURY, LOSS, OR DAMAGE TO PERSON OR PROPERTY RESULTING FROM THE RISK OF EQUINE ACTIVITIES

Dated: _____ Signature: _____

Name: _____

Address: _____

Phone No.: _____

RELEASE, WAIVER, HOLD HARMLESS, AND INDEMNIFICATION AGREEMENT

The undersigned Participant/Spectator/Visitor/Guest/Client (collectively "Participant"), on his/her own behalf and as the Parent(s)/Legal Guardian(s) of a minor Participant, for good and valuable consideration, agrees to the following terms and conditions of this Release, Waiver, Hold Harmless, and Indemnification Agreement ("Agreement"):

1. **Assumption of Risk and Waiver:** Participant understands and accepts the risks of engaging in Equine Activities (as defined below), while mounted or unmounted, as well as merely being near a horse, mule, or pony (collectively "equine"), include, but are in no way limited to: (i) The propensity of an equine to behave in ways that may result in injury, harm, or death to persons on or around them (i.e. jump, run, kick, buck, bolt, spin, rear up, strike, bite, etc.); (ii) The unpredictability of an equine's reaction to sounds (i.e. machinery, equipment, vehicles, doors, snow and ice falling, rain, wind, thunder, voices, animals, fireworks, guns, motors, etc.), sudden movement, and unfamiliar objects, persons, other animals (i.e. loose or contained dogs, wild and domestic animals, etc), or other things (i.e. jumps, poles, cones, flowers, mini-bikes, water, etc., and training devices such as whips, bats, etc.); (iii) Certain hazards such as surface and subsurface conditions; (iv) Collisions with other equines or objects; (v) The potential of a participant to act in a negligent manner that may contribute to injury to Participant or others, such as failing to maintain control over the animal, or not acting within his or her ability; and (vi) Riding and training tack and equipment may contribute to or cause injury to Participant. Participant agrees that engaging in Equine Activities under this Agreement includes, but is in no way limited to, those defined in the Illinois Equine Activity Liability Act, as well as riding one's own or another's equine, competing, training, exercising, petting, leading, transporting, feeding, watering, bathing, watching, or transporting equines, or assisting with any of these activities, as well as auditing equine related clinics, and/or boarding Participant's equine at Grand Paradise Ranch, Inc.'s facility ("the Facility"), whether for a limited or extended period of time, and otherwise interacting with or merely being in the vicinity of equines ("Equine Activities"). Participant understands the injuries, death, loss, and property damage that may result from the accepted risks of engaging in Equine Activities, boarding Participant's equine, or just being near an equine, that equines are powerful and have the potential to be dangerous, even without warning, and that the risks listed in this Agreement are just a sampling and Participant is not relying on Released Parties (as defined below) to list all possible equine-related risks. Participant therefore agrees, on his/her own behalf and on behalf of his/her minor Participant, that he/she understands and agrees to assume the risks and dangers inherent in Equine Activities, auditing or watching Equine Activities, and boarding Participant's equine at the Facility, agrees to inspect and remain responsible for the condition and proper adjustment of Participant's tack and equipment, agrees to at all times to be responsible for Participant's personal safety, remain financially responsible for Participant's and Participant's equine's medical expenses and lost value, and waives Participant's right to any claims arising from participation in or observation of any Equine Activities, boarding Participant's equine at the Facility, riding Participant's equine or someone else's equine, whether on or off the Facility, being near an equine, or merely being present on real property owned, leased, rented, borrowed, visited, organized upon, or otherwise occupied or utilized by Grand Paradise Ranch, Inc., Linda Freeman, Tom Freeman, and/or their respective officers, directors, owners, employees, independent contractors, spouse, heirs, trustees, beneficiaries, assigns, agents, trainers, clinicians, volunteers, guests, visitors, invitees, boarders, and others acting on their behalf, (collectively "Released Parties") regardless of whether or not Participant's presence at the Facility is related to equines or Equine Activities.

2. **Release, Hold Harmless, Indemnification:** Participant agrees to release, hold harmless, and indemnify the Released Parties for any and all illness, injury, death, damage, and/or any and all other claims or losses of any kind or nature (collectively "Loss") incurred by Participant, Participant's equine, or third party, whether caused by Participant directly or indirectly, even if caused in whole or in part by the negligence or any other fault of the Released Parties, except willful and wanton misconduct. Participant agrees to reimburse Released Parties for their attorneys' fees and costs incurred to defend against any such claims.

3. **Governing Law and Time Limitation:** The Parties agree that this Agreement shall be construed and enforced in accordance with the laws of the State of Illinois and all disputes relating to the interpretation and enforcement of this Agreement will be resolved exclusively by the State Court in St. Clair County, Illinois. The Parties submit to this jurisdiction and venue for these purposes. Participant agrees that any claims for Loss of any kind by Participant against the Released Parties, must be brought within one (1) year of the date they accrue and any claim for personal property Loss, including but not limited to the loss value of the equine, is limited to \$500.00 (Five Hundred Dollars).

4. **Attorneys' Fees:** Participant agrees to reimburse Released Parties for any and all attorneys' fees and costs he/she/it incurs in enforcing the terms of this Agreement and/or in defending or prosecuting any claims or causes of action involving or in any way relating to Participant.

5. **Participant Certification:** Participant certifies that he/she has read this entire Agreement and understands, agrees, and intends on his/her own behalf, and on behalf of his/her minor Participant, spouse, heirs, agents, representatives, relatives, successors, and assigns, to be bound by all of the terms and conditions contained herein.

WARNING UNDER THE EQUINE ACTIVITY LIABILITY ACT, EACH PARTICIPANT WHO ENGAGES IN AN EQUINE ACTIVITY EXPRESSLY ASSUMES THE RISKS OF ENGAGING IN AND LEGAL RESPONSIBILITY FOR INJURY, LOSS, OR DAMAGE TO PERSON OR PROPERTY RESULTING FROM THE RISK OF EQUINE ACTIVITIES

_____ Signature:		_____
Dated	Participant signing on own behalf and as Parent/Legal Guardian if Participant is a minor	Add'l Parent/Legal Guardian if Participant is a minor
	Address: _____	Address: _____
	Phone: _____ E-Mail _____	Phone: _____ E-Mail _____
	Minor Participant's Name and Date of Birth: _____	

RELEASE, WAIVER, HOLD HARMLESS, ASSUMPTION OF RISK, DEFEND, AND INDEMNIFY
AGREEMENT FOR INFECTIOUS DISEASES INCLUDING COVID-19 RELATED LOSS

WARNING:
IMPORTANT NOTICE

BY SIGNING THIS AGREEMENT, YOU ARE GIVING UP CERTAIN LEGAL RIGHTS, INCLUDING THE RIGHT TO RECOVER DAMAGES IN CASE OF ILLNESS, INJURY, OR DEATH (collectively "Loss") ARISING OUT OF YOUR PRESENCE AT THE FACILITY SPECIFICALLY RELATED TO COVID-19 OR ANY OF ITS MUTATIONS, FORMS, DERIVATIVES, OR OTHER INFECTIOUS DISEASES (collectively "COVID-19").

I, the undersigned, hereby enter into this Release, Waiver, Hold Harmless, Assumption of Risk, Defend, and Indemnify Agreement for Infectious Diseases Including COVID-19 Related Loss ("**Agreement**") in consideration of my, and my minor child if applicable (collectively "**I**", "**me**", or "**my**"), ability and permission to access, utilize, occupy, visit, attend, or otherwise be present on Grand Paradise Ranch, Inc. property ("**the Facility**") during and after the COVID-19 pandemic, for any reason, whether or not related to equines or equine activities.

1. Risk of Loss/Protective Measures/No Guarantee: By signing this Agreement, I hereby acknowledge that I have familiarized myself with the risk of Loss being present at the Facility for any reason whatsoever and the protective measures at the Facility intended to minimize my risk of exposure to COVID-19. I agree the protective measures are satisfactory and sufficient for me to accept and assume the risk of my COVID-19 exposure resulting from accessing, utilizing, occupying, visiting, attending, or otherwise being at the Facility occupied by other individuals; however, I understand and agree that Released Parties cannot guarantee: (a) the protective measures can or will prevent my exposure to COVID-19; (b) will be complied with by all individuals at the Facility; or (c) that others will not act in a negligent manner that may contribute to my Loss or contraction of COVID-19. I agree to fully comply with all protective measures required by Grand Paradise Ranch, Inc. as they now exist or may be revised from time-to-time. I accept full responsibility for my own safety and the sanitization of myself and my personal property and/or other personal property I contact at the Facility. If I am a parent or legal guardian of a minor individual at the Facility, I consent to the minor's presence at the Facility and agree to remain responsible for the minor's Loss and minor's compliance with all required protective measures.

2. Medical Attention/Disclosure: I understand and agree that engaging in equine activities or merely being at the Facility exposes me to inherent risks of personal injury that may require medical attention including, but not limited to, first aid and/or emergency medical care. I therefore consent to personal contact by Released Parties and/or medical personnel deemed necessary for providing for my care at the Facility and/or the hospital, even at the risk of my COVID-19 exposure. I agree to hold Released Parties harmless for such medical attention and any Loss directly or indirectly resulting therefrom. I agree that in the event I am diagnosed as infected with COVID-19, I authorize medical personnel to provide Grand Paradise Ranch, Inc. information regarding my Loss and treatment for contact tracing or any other purpose.

3. Release/Hold Harmless/Defend/Indemnify: I agree to release, hold harmless, defend, and indemnify Grand Paradise Ranch, Inc., Linda Freeman, Tom Freeman, the owner/tenant/lessor/user/occupier of the Facility, and their respective relatives, heirs, trustees, beneficiaries, related entities, members, managers, owners, officers, directors, agents, assigns, employees, working students, volunteers, contractors, trainers, clinicians, guests, visitors, invitees, partners, lessors, lessees, licensors, licensees, and others acting on their behalf (collectively "**Released Parties**") from and against any liability, attorneys' fees, costs, or other Loss I may incur arising out of or in any way connected with my exposure to or contraction of COVID-19 as a direct or indirect result of my presence at the Facility whether by my negligence or the negligence or other wrong doing of Released Parties (except willful and wanton or intentional misconduct).

4. Bound Parties/Governing Law/Jury/No Expiration/Time Limitations/Severability/Modification: I understand and agree the terms of this Agreement are binding on my spouse, partner, family members, minor child, heirs, agents, trustees, beneficiaries, representatives, relatives, successors, and assigns and I agree to all the terms and conditions of this Agreement on my own behalf and on behalf of my minor for purposes of permitting our presence at the Facility. In the event of a claim or dispute arising out of or relating to the interpretation or enforcement of this Agreement, I agree Illinois law applies, that all disputes surviving this Agreement must be resolved exclusively by the state court in St. Clair County, Illinois and I waive my right to a jury trial. I agree that this Agreement does not expire and that any surviving claims must be brought within one (1) year of the date accrued. If any provision of this Agreement is deemed invalid or unenforceable, the remaining provisions shall be valid and enforceable to the fullest extent of the law. This Agreement can only be modified in writing signed by myself and Linda or Tom Freeman.

WARNING

BEFORE SIGNING THIS FORM, I ACKNOWLEDGE THAT I HAVE READ AND FULLY UNDERSTAND ALL OF THE INFORMATION CONTAINED THEREIN. I ACKNOWLEDGE THAT I DO NOT NEED ANY FURTHER EXPLANATION OF ITS CONTENTS AND WAIVE ANY FURTHER EXPLANATION. I HAVE VOLUNTARILY AGREED TO ITS TERMS AND PROVISIONS, UNDERSTAND AND AGREE THAT I HAVE OTHER FACILITIES TO CHOSE FROM, AND AGREE THAT NO OTHER STATEMENT, REPRESENTATIONS OR INDUCEMENT, APART FROM WHAT IS STATED IN THIS AGREEMENT, HAVE BEEN MADE TO ME TO OBTAIN MY CONSENT AND MY SIGNATURE.

Date: _____ Printed Name: _____

Signature: (on my own behalf and on behalf of minor, if applicable): _____

Address: _____

Phone: _____ E-mail: _____

Emergency Contact (name and phone #): _____